

P

E

I

Protezioni
Elaborazioni
Industriali



GENERAL CATALOGUE



A LABEL
THAT MEANS **QUALITY**

Welcome to P.E.I.

P.E.I. Srl was founded in Bologna and has been operating for over 45 years in the field of workplace safety and protective covers for machine tools, becoming a leader in this market.

Commercial skills, extensive know-how in production engineering and constant technical innovation represent the set of driving values in **P.E.I.**: our products are distributed worldwide through a widespread network of sales technicians that guarantees coverage across the whole of Italy and Germany as well as a major part of the rest of Europe.

The company invests considerable resources in research and development, study of new product applications and state-of-the-art production techniques.

Research and technological innovation, combined with a predisposition to enter new markets, have always been the elements that distinguish us and make us proud.

Our history is characterised by an entrepreneurial attitude open to new challenges, to anticipate new market trends and to exploit opportunities for growth.

Our figures



Our brands



PEI Mobility, a brand of P.E.I. Srl, is specialised in the production and sale of articulated bus bellows for over 20 years and since 2022 has extended its production range by introducing articulated joints and becoming a partner of the world's leading articulated vehicles manufacturers.

www.peimobility.com



PEI VM S.r.l. with its 20-years experience in the NVH (Noise, Vibration & Harshness) provides consultancy and vibration diagnostics systems in many application areas, such as power transmission automotive, motorcycle, powertools, packaging.

www.peivm.it



Nuova Metal S.r.l. is an ISO 9001:2015 certified company with 30-years experience in light metal carpentry sector, specialised in designing and manufacturing metal furniture for different purposes, in particular for medical and food sectors.

www.nuovametal.com



Zanini S.r.l. is a UNI EN 3834-2 certified company with great experience in the field of medium and light metal carpentry, specialised in metal machining for the railway and packaging sectors.

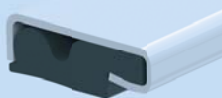
www.zaninisrl.net

TELESCOPIC STEEL COVERS



Standard	4
Light	7
Special	7
Compact	8
Compact, double	9
Compact, round	9
Compact, square	9
Compact, dismountable	10
Overhauling	11
Leak-tight	12

WIPERS AND BRUSHES



Profiled wipers	14
3D wiper	15
Linear wipers	16
Linear brushes with support frame	19

ROLL-UP COVERS



Roll-up covers	20
Ceramix - Ceramix Light bands	20
Sure Spring® - Sure Spring® HP mechanism	21
Without canister	22
With canister	24
Roll-up covers for lathes - Roll-up covers overhauling	26
Roll-up shields	27
Apron covers	28
Vertical, motorised	28
Frontal	29
Walkable	30
Walkable for long strokes	31
Over 2 axes	32
Extruded aprons	33

PROTECTIVE BELLOWS



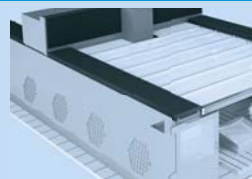
Flat Covers	35
Thermic-welded	35
Thermic-welded with fixed laminations	36
Thermic-welded with flexible laminations	37
Thermic-welded for hoisting platforms	41
Quick Box Bellow	41
Thermic-welded covers for linear slides	43
Bellows for laser machines	44
Unique Steel Cover EVO	45
Special	46
Sewn	47
Round Covers	48
Sewn	48
Thermic-welded	48
Heat-formed and openable	49

X-Y SHIELDS WITH LAMINATIONS



X-Y shields	50
Modular X-Y shields	51
Giant Shield - Large size shield	54

ROOF PROTECTIVE COVERS



Wave Sky	55
Wave Sky Light	56
Wave Sky Heavy	56
Wave Sky Chemical	57
Wave Cover	57
Smartdrive HP	58
Fabrics	59

GENERAL INFORMATION



Applications	60
Italian & German sales network	62
European sales network	63
The P.E.I. world	64



TELESCOPIC STEEL COVERS

For all types of machine tools

The steel used is extremely high quality in terms of flatness, corrosion resistance and wear resistance. Sheet thickness ranges from 1.5 to 3 mm.

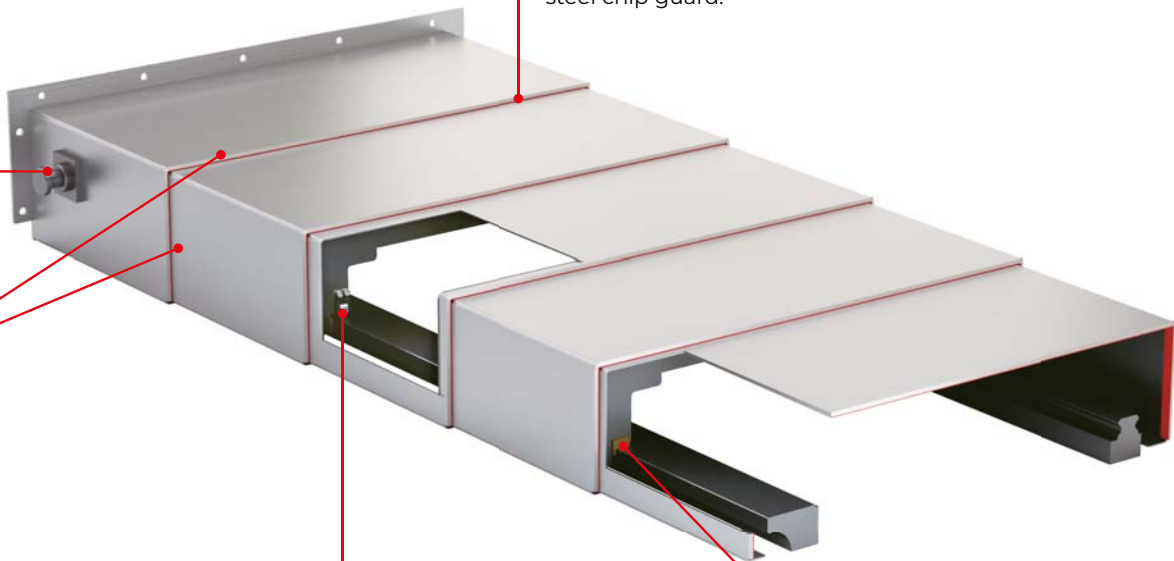
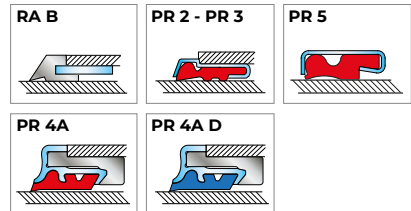
Telescopic Steel Covers may also be made of stainless steel.



Lifting systems can be applied to telescopic covers of various forms and have different characteristics according to customers' needs and the weight of the protection.



Wipers keep the surface clean and prevent chips from getting under the plates. They are made of polyurethane to resist against heat and coolants, with or without a protective stainless steel chip guard.



In case of high speed, (patented) **shock absorbers** reduce noises and oscillations. Made of polymer that does not deteriorate in contact with coolants. They are very effective in reducing impact between boxes during movement.



Rollers and bearings, in case of high speeds or loads, are inserted to preserve safe and noiseless running. Both rollers and bearings are assembled on bolted housings allowing correct alignment as well as quick and easy maintenance.



Special anti-friction **sliders**, made of brass or non-metallic material, do not wear out the guideways of the machine on which they run. Available in many sizes and cross-sections.



Working Positions

Horizontal

For horizontal working positions.
This is the most common solution regardless of size of cover and length of stroke.

In most cases, mounting in the machine is done by lowering the cover from above, thus handling is easier even in narrow spaces.



Transverse

For frontal working positions.
Suitable for small to large-sized covers.
To prevent the cover boxes from jumping out of the guideways, on the upper side special retaining slides are mounted, designed for fitting exactly the profile of the guideways.
The cover can be mounted frontally by sliding it onto the guides or it may be lowered from above.
In case of frontal covers between two carriages, their design must consider the frontal mounting from above.



Vertical

For vertical working positions.
Suitable for small to medium-sized covers.
To prevent the cover boxes from jumping out of the guideways, special retaining slides are mounted to fit exactly the profile of the guideways.
For larger dimensions it is possible to fit retaining slides that allow the cover to be mounted directly onto the guides from the front, without inserting it.
If desired, plates can be worked out inside the cover particularly to prevent lubricants from leaking onto hydrostatic guides.

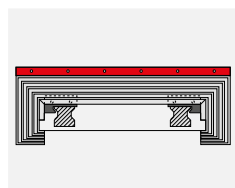


Multi-axis for lathe

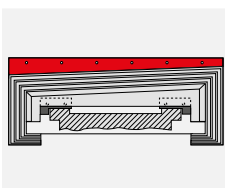
Telescopic cover for lathes Z-axis or axes that run parallel to the Z-axis, such as counter spindles, lathe centres and steady rests.
Based on the axis involved, the shape of the telescopic elements, the shape and position of the guides, mounting can be done from the front or it may be necessary to slide the cover onto the guides.



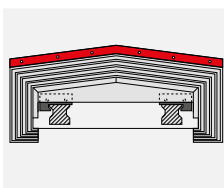
Configurations



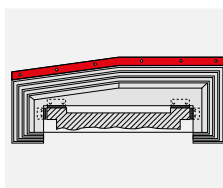
Form 1



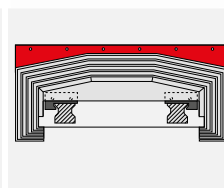
Form 2



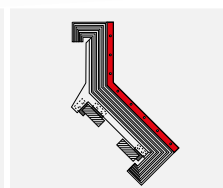
Form 3



Form 3, variant



Form 4



For lathe

Fill in the form available on our website to receive a tailored offer of the most suitable Telescopic Protection according to your project requirements

[click here](#)



Pulling System

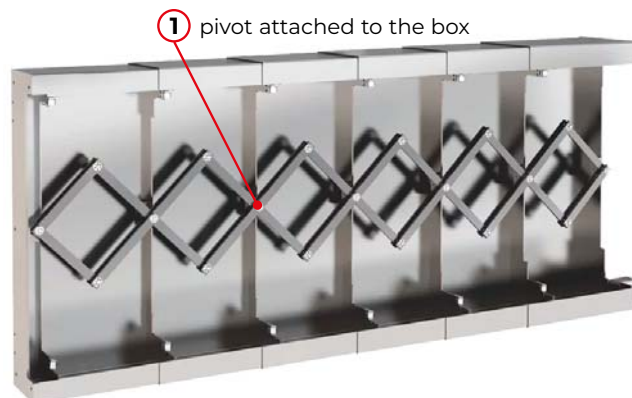
TRADITIONAL PANTOGRAPH

Our traditional scissor system is designed for synchronised movement of all cover boxes of a telescopic cover. This allows all boxes to move together and evenly.

As there is no stop between the cover boxes, the system runs independently of the drive speed and thus enables high travel speeds.

Proper sizing of the components of the scissor system, as well as proper design concerning dimensions and shape of the cover boxes, make this system robust and durable. The machine must provide the drive force to move all the cover boxes simultaneously, even for short strokes.

The pantograph supports constant keeping of roughness in high-finish machining.



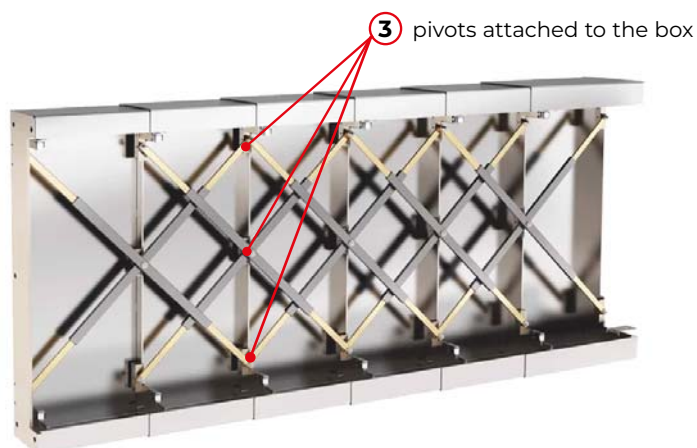
SYNCHRO-TEL TECH (Patented)

The system harmonises opening and closure of medium-sized telescopic covers and is suitable for high speeds and accelerations.

The coupling tolerance between the metal rods is reduced to a minimum.

Unlike a normal pantograph, it can have up to three pivots attached directly to the boxes, thus avoiding vibrations.

Mathematical calculations and operating tests guarantee that **SYNCHRO-TEL TECH** is the most reliable and durable solution, compared to known synchronisation mechanisms.



watch on  YouTube



DAMPER-SHELL EVO (Patented)

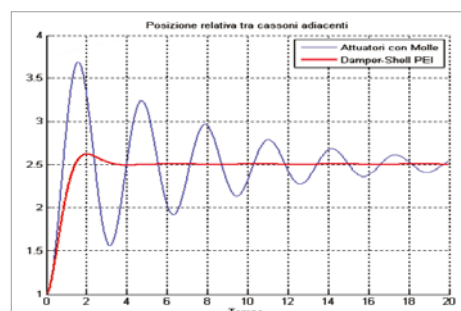
Viscoelastic shock absorbers for energy dissipation in large scale telescopic covers working in horizontal and frontal positions.

Made of polymer of a special **P.E.I.** formulation, it is manufactured in two geometric dimensions.

DAMPER-SHELL guarantees up to 2.000.000 cycles and is ideal for working speeds up to 100m/min and acceleration up to 1g.

Free from boost residue whether the telescopic cover is closed or in resting position, it opens smoothly during expansion without causing friction on the boxes.

This damper is ideal for long strokes being a silent, durable, reliable and maintenance-free solution.





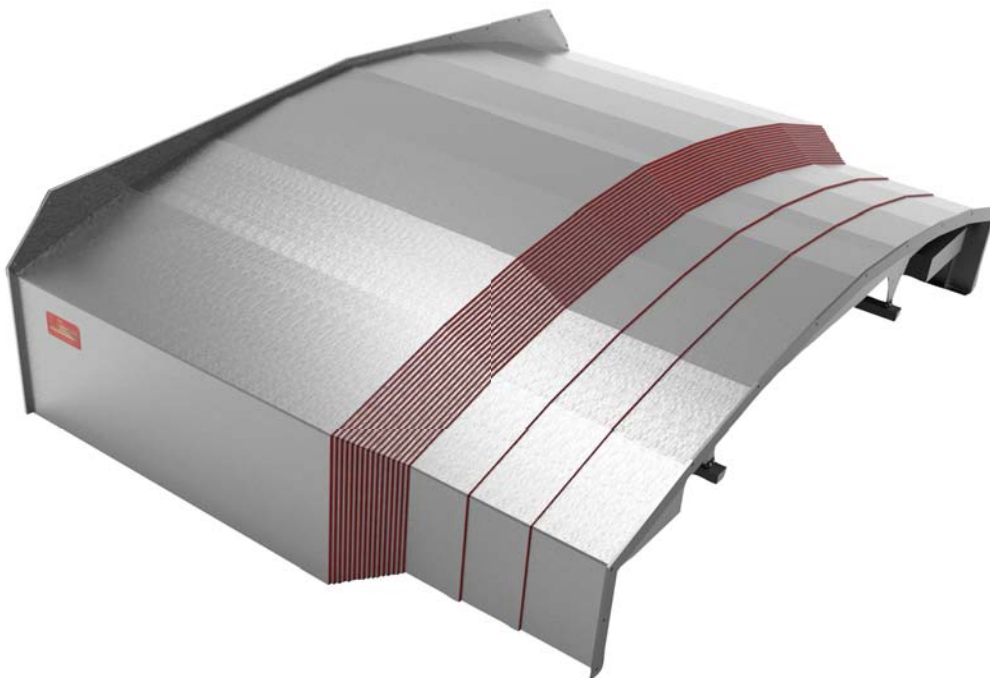
MULTIBEND

The A++ telescopic cover for horizontal axes

The telescopic cover **MULTIBEND** has a weight reduction by up to 50 percent compared to a standard telescopic cover. The decrease in moving masses leads to a reduction of inertia, the telescopic cover can properly support the high dynamics of current machines.

The calculation software has been specially developed by **P.E.I.** to calculate bending of the boxes and consequently to optimise geometry and cost savings.

The abatement of the power required for driving the machine tool results in reduction of CO₂ emissions, thus saving raw materials and resources.

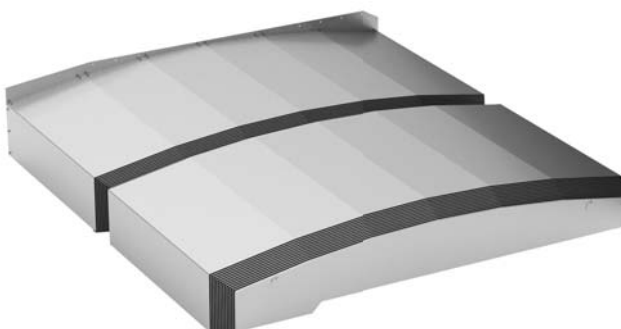


TELESCOPIC STEEL COVERS ■ Special



Some examples of our special telescopic covers:

Two telescopic covers joined together for long strokes.



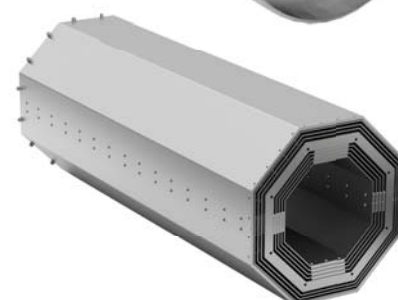
Stainless steel aspirator with telescopic column synchronised by pantograph.



Double telescopic cover with rectangular shape.



Double telescopic vertical protection especially suitable for worm gears and screws.





SHEET-POCKET™ (Patented)

The **SHEET-POCKET™** Telescopic Steel Cover solves issues in shielding the Y-axis (vertical) in horizontal machining centers and in boring machines, even in case of very large strokes.

It is supplied in a fully enclosed frame that is independent from the machine structure: the self-contained steel cover is easy to install and remove for maintenance or inspection.

The rigid and steady geometry of the elements ensures that they keep fastened together and well aligned.

This allows perfect scraping and extends the life of the **SHEET-POCKET™** even with large quantities of chips.

Minimal maintenance required.

The double-stepped version prevents fluid penetration during machining.

Speeds up to 150 m/min. Accelerations of 2 g.

The **SHEET-POCKET™** Telescopic Steel Cover can be easily combined with [SURE-SPRING®](#) roll-up covers or with protective shields with laminations.





SHEET-POCKET™ PROSHD (Patented)

The compact double telescopic cover **SHEET-POCKET™ PROSHD** is a protective shield which separates the working area from the motor in a machine tool while allowing the spindle to move freely.

The special design keeps even the smallest chips, usually produced when machining hard metals, brass alloys or aluminium, from penetrating.

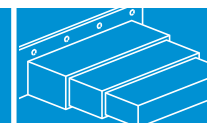
The wiper between the elements especially prevents the penetration of liquids.

These covers are suitable for medium-size horizontal machining centres.

In horizontal installation position, equipped with wipers and pressurisation system, the cover prevents the penetration of coolants and oils.



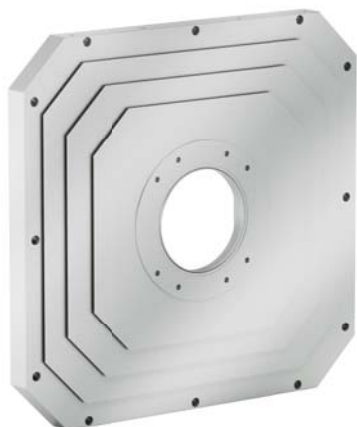
TELESCOPIC STEEL COVERS ■ Compact round and square



The telescopic steel covers **ROUND SLIDING COVER™** and **SQUARE SLIDING COVER™** were designed to meet special needs that frequently arise on special or transfer machines and small machining centers.

ROUND SLIDING COVER™ and SQUARE SLIDING COVER™

- For dual-axis operation
- High speed
- Compact size
- Easy to install





SNAP TELESCOPIC COVER

The "EASY-ACCESS" Cover

This innovative cover can be totally dismantled and is ideal for protecting frontal and vertical axes in small to medium working centres, transfer machines, lathes and milling borers.

Easy access to both the whole cover and machine tool: maintenance works can be carried out quickly, while the overall time required for all steps is minimized.

Due to the "modular" design of this cover, individual damaged elements can be replaced without use of special tools. The cover is assembled weldless and can therefore be completely disassembled into its individual parts.

This telescopic cover is made of highly resistant steel, the recommended maximum dimensions are one metre in width and 4.5 metres in height.

This new telescopic cover is characterised by a closed design that is independent of the supporting machine structure.

The passage of the work spindle can be sealed with PU wipers. Equipped with a synchronisation mechanism, the cover reaches speeds of up to 150 m/min and accelerations up to 2g.

[watch on](#)  **YouTube**



Features

- MAINTENANCE: quick inspection operations
- DISASSEMBLY: the components can be disassembled directly on the machine
- ASSEMBLY: manual, as there are no welded parts
- MATERIAL: highly resistant steel
- DIMENSIONS: up to 1 metre wide and 4.5 metres high
- SPEED: up to 150m/min and acceleration up to 2g.

Disassembly





TELESCOPIC COVER OVERHAULING

- Overhaul of all types of telescopic covers for machine tools
- Renew or replacement of worn-out or damaged sections
- Replacement of sliders or guide rollers
- Replacement of worn brass or PU wipers
- Cleaning and buffing to original finish
- On-site inspection of **P.E.I.** staff: If the protective cover cannot be repaired, we can offer you a tailored new one.
- **P.E.I.** staff can provide in-depth technical consultancy and recommend any changes or make suggestions for improvement customisations.
- Short delivery time.



INSPECTION OF P.E.I. STAFF FOR ON-SITE MEASUREMENTS



DUAL BARRIER SYSTEM

The leak-tight protections of **DUAL BARRIER SYSTEM** consist of a telescopic cover with integrated bellow sections. The "double insulation" system is mostly used, that is a thermic-welded bellows underneath a telescopic cover.

In the **DUAL BARRIER SYSTEM** the telescopic cover and the thermic-welded water-repellent bellow are combined to form an absolutely leak-tight protective cover.

The bellow conveys the coolant to the conveyor or to the cooling tank, thus preventing the coolant from mixing with the hydrostatic oil.

For applications in the field of occupational safety, the **DUAL BARRIER SYSTEM** telescopic covers can also be offered in walk-on version.

DUAL BARRIER - 2EVO (Patented)

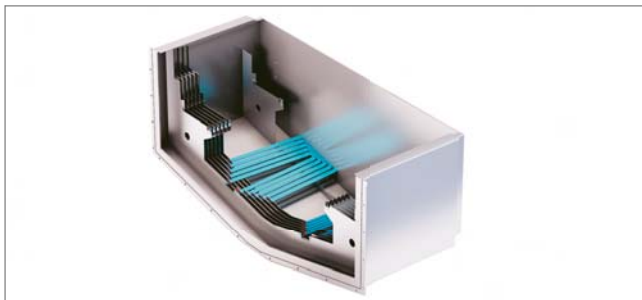
DUAL BARRIER 2EVO features an innovative system: each cover box of the telescopic cover contains a bellows segment. In this way, the machine manufacturer obtains a complete cover and only has to mount one guideway, onto which the bellows is guided by the telescopic cover.



[watch on](#)  YouTube

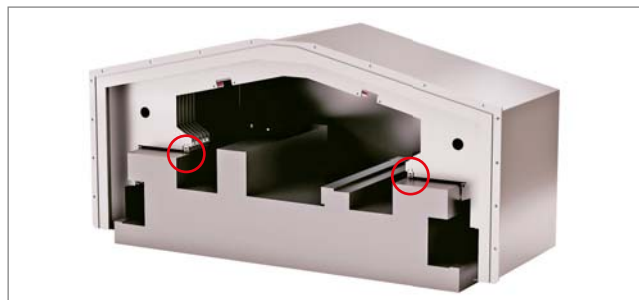


Closed length



The closed length dimension is greater than that of a normal telescopic cover: the difference varies depending on the space conditions in the machine and the specific requirements.

Features



DUAL BARRIER - 2EVO has only the telescopic cover running on the 2 slideways, the bellow sections are sustained by brackets integrated in the cover.



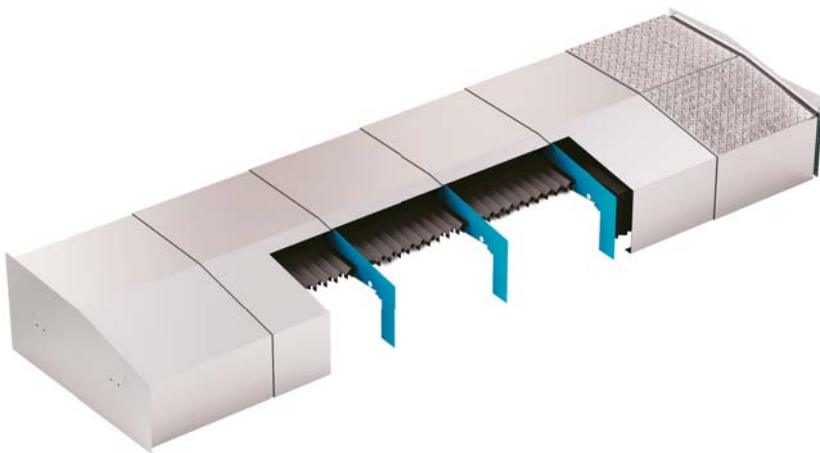
DUAL BARRIER - 4SPC

A complete protection system consisting of a telescopic cover with integrated bellow sections.

Bellows sections are combined with the telescopic boxes, to form a single leak-tight cover system.

To access the guides of the machine, easy unscrew only the fastening flange of the telescopic cover.

To remove or install the cover, simply lift it.

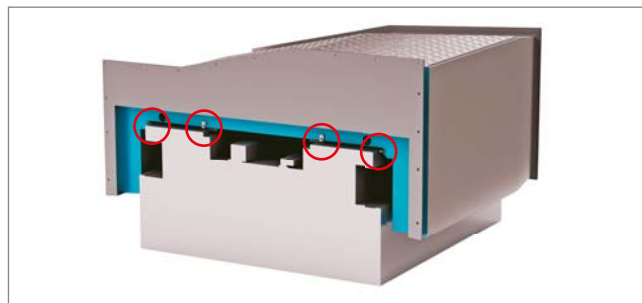


Closed length



The closed length is made up of the sum of the closed length of the telescopic element and a part of the closed length of each bellow inserted between the telescopic elements.

Features



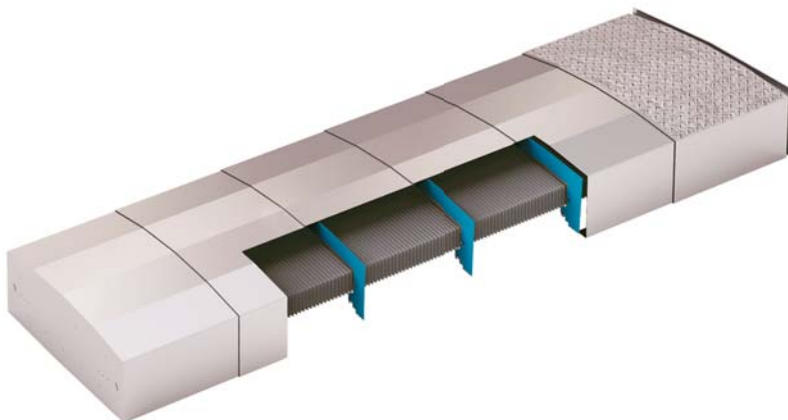
DUAL BARRIER - 4SPC requires 2 slideways with 2 bearings for the telescopic cover and further 2 bearings for the bellow sections.

DUAL BARRIER - 4STD

The complete cover consists of a thermic-welded bellow and a telescopic cover.

To access the guides of the machine, remove both the cover and the bellow mounting flanges.

To remove or install the cover, both the bellow and the telescopic cover must be lifted in two steps.



Closed length



Same closed length dimension as the telescopic cover.

Features



DUAL BARRIER - 4STD requires 2 slideways for the support of the telescopic cover and further 2 slideways for the bellow.

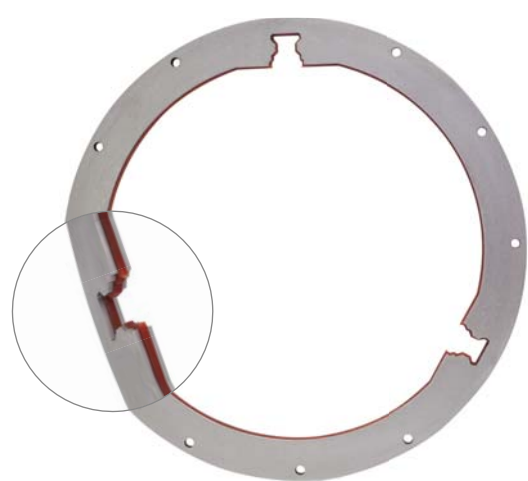
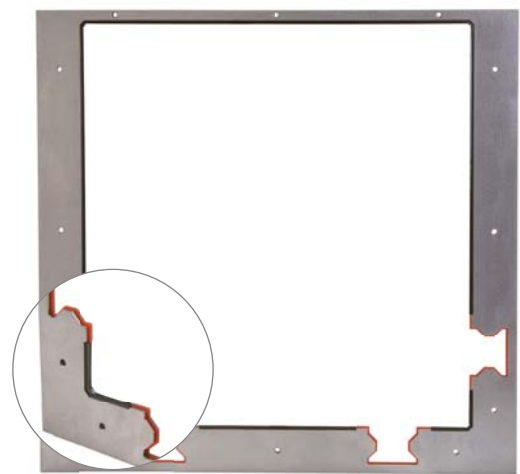
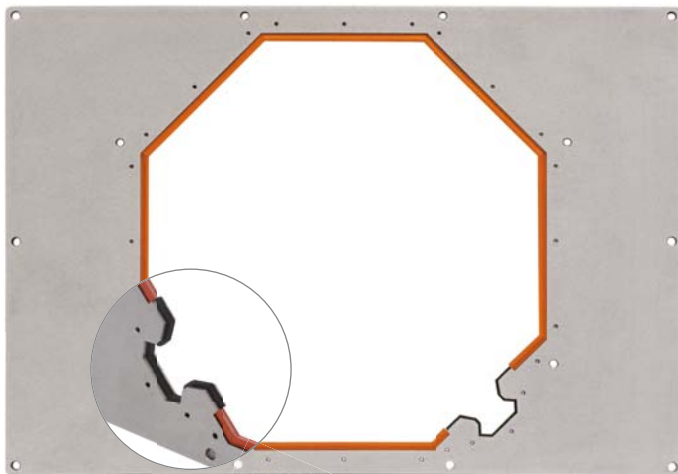


WIPERS

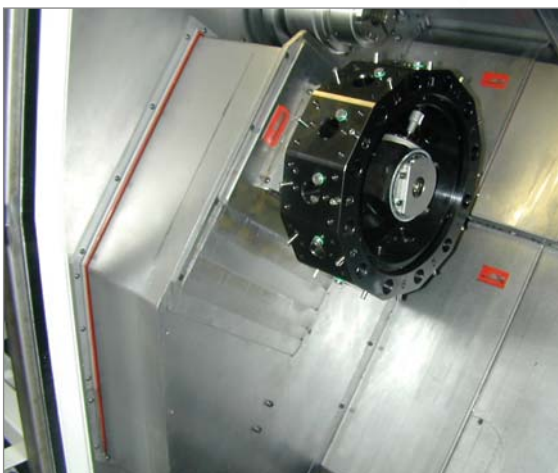
Wipers keep machine tool guides clean of chips, metal dust and abrasive substances.

PROFILED WIPERS

They are suitable for work environments with a heavy concentration of sharp shavings: their polyurethane profile resists against abrasion and can be easily replaced. Any shapes and dimensions available according to customer drawings. There are no equipment costs, so they can be produced in small series. For fastening them, we recommend counter-sunk hex screws.



APPLICATION EXAMPLE





The profiled wipers can be manufactured by using traditional technology or innovative additive technology.

3D WIPER

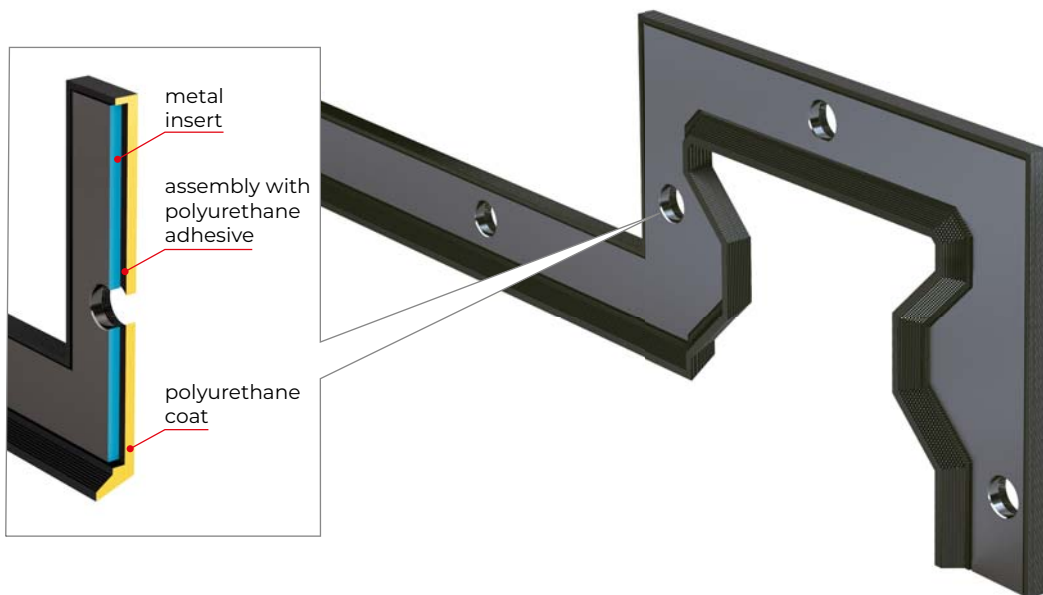
The new line of P.E.I. wipers with polyurethane coat produced by additive technology.

P.E.I. has developed its own additive, unique on the market technology and built its own printers to produce optimally functioning wipers that can match the properties of pressed wipers.

The P.E.I. technology can produce wipers up to 1,000 x 1,000 mm in a single piece, with no interruptions in the polyurethane element.

- Flexible dimensions
- No tools have to be made
- No minimum or maximum production batch sizes.

A detailed 2D drawing or a 3D model of the guideway in any CAD format (including bore coordinates for the connection) is sufficient for the design of conventional wipers as well as wipers manufactured by additive technology. Pre-loading is determined by our engineering department based on the shape of the wiper.



APPLICATION EXAMPLES



BIPLASTIC WIPERS

P.E.I. biplastic wipers are modelled on the client drawing. Strip-lengths are available in prompt delivery.



➔ Also available via our online-shop: <https://shop.pei.it/en/3-wipers>

<p>RA 01 BP</p> <p>Profile: Polyurethane Length: 2000 mm. Rigid polymer insert</p>	<p>RA 03 BP</p> <p>Profile: Polyurethane Length: 2000 mm. Rigid polymer insert</p>	<p>RA 05 BP</p> <p>Profile: Polyurethane Length: 2000 mm. Steel insert 12x3</p>	<p>FB40FLEX</p> <p>Profile: Polyurethane Length: 2000 mm. Steel insert 18x3</p>
----------------------------------------------------------------------------------------------------------	----------------------------------------------------------------------------------------------------------	-------------------------------------------------------------------------------------------------------	-------------------------------------------------------------------------------------------------------

FB WIPERS

FB wipers are modelled on the client drawing or supplied in linear strips.

<p>FB 14</p> <p>Profile: Polyurethane * Length: 530 mm. Stainless steel reinforcement</p>	<p>FB 18</p> <p>Profile: Polyurethane * Length: 3000 mm. Stainless steel reinforcement</p>	<p>FB 18L</p> <p>Profile: Polyurethane * Length: 1000 mm. Stainless steel reinforcement Shielding in stainless steel 301</p>
<p>FB 25</p> <p>Profile: Polyurethane * Length: 3000 mm. Stainless steel reinforcement</p>	<p>FB 25L</p> <p>Profile: Polyurethane * Length: 1000 mm. Stainless steel reinforcement Shielding in stainless steel 301</p>	<p>FB 27</p> <p>Profile: NBR * Length: 500 mm. Galvanized steel reinforcement Shielding in stainless steel 301</p>

* Prompt delivery

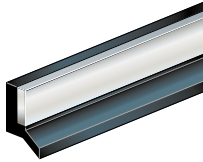
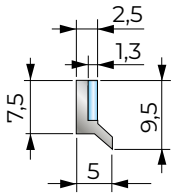
Dimensions in mm.



RA WIPERS

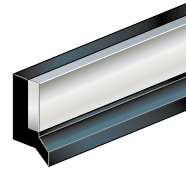
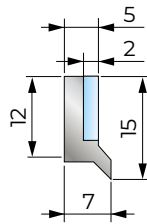
RA wipers are modelled on the client drawing or supplied in linear strips.

RA 01



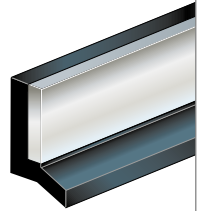
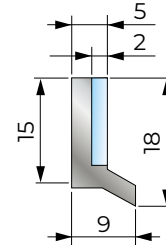
Profile: **NBR *** or **Viton® ***
Length: **560 mm.**
Steel insert

RA 02



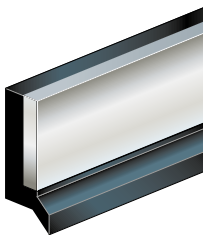
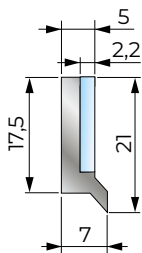
Profile: **NBR *** or **Viton® ***
Length: **560 mm.**
Steel insert

RA 03



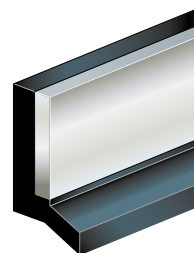
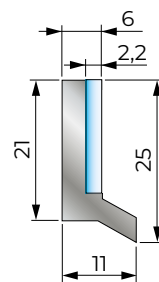
Profile: **NBR ***
Length: **560 mm.**
Steel insert

RA 04



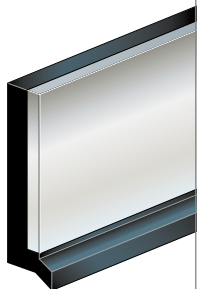
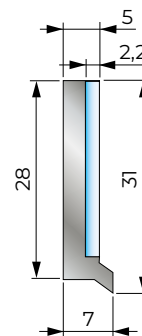
Profile: **NBR ***
Length: **560 mm.**
Steel insert

RA 05



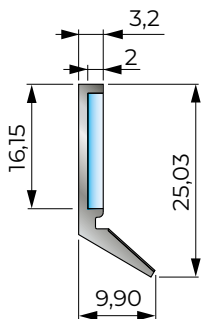
Profile: **NBR *** or **Viton® ***
Length: **560 mm.**
Steel insert

RA 06



Profile: **NBR ***
Length: **560 mm.**
Steel insert

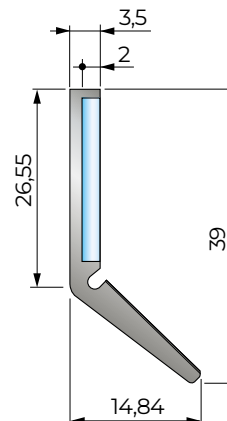
RA 25L



Profile: **NBR ***
Length: **800 mm.**
Steel insert

Thin metal protective plate in stainless steel 301

RA 39L



Profile: **NBR ***
Length: **800 mm.**
Steel insert

Thin metal protective plate in stainless steel 301

* Prompt delivery

WIPERS FOR TELESCOPIC COVERS

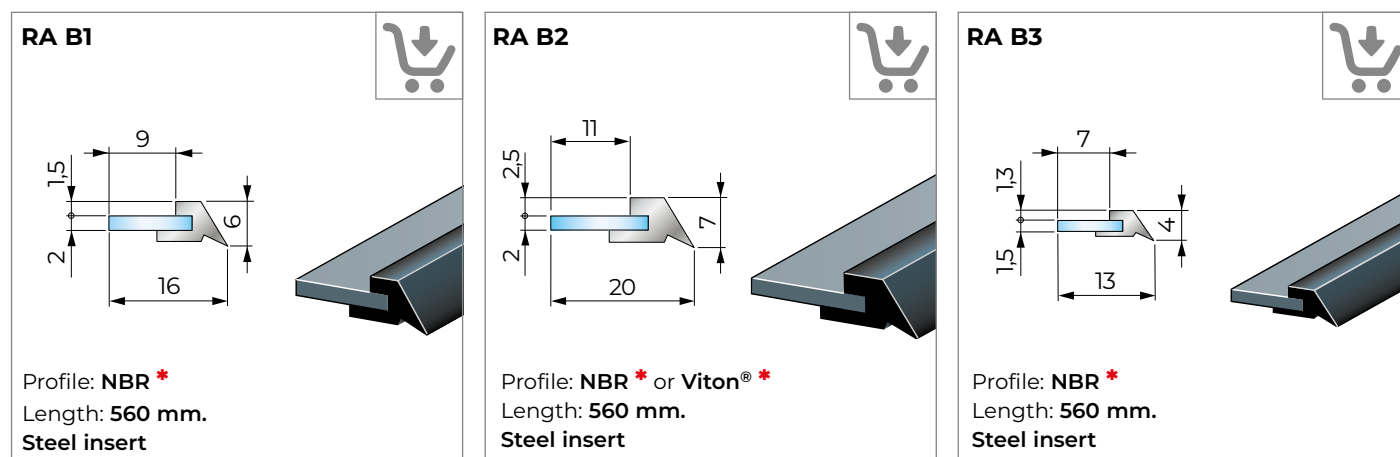
These types of wipers are normally applied to telescopic covers:

Codes **RA B1**, **RA B2** and **RA B3** consists of a metal insert to which an NBR profile has been vulcanized.

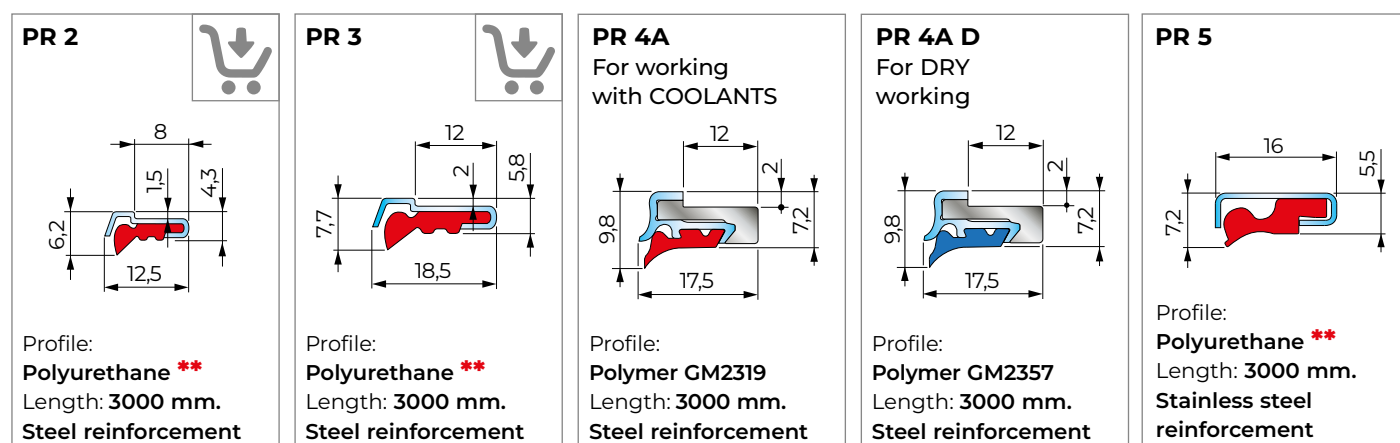
Codes **PR 2** and **PR 3** has steel reinforcement and polyurethane profile.

Codes **PR 4A** and **PR 4A D** can be instantly replaced on the telescopic cover, without disassembling the cover itself. They have a metal reinforcement with a seal designed to clean the cover.

Code **PR 5** is suitable for large-sized telescopic covers. No protrusion from box results in better protection from chips and an aesthetically pleasing appearance of the telescopic cover.



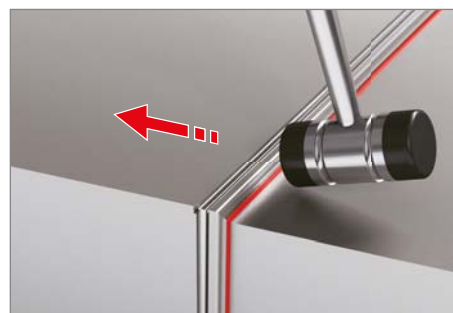
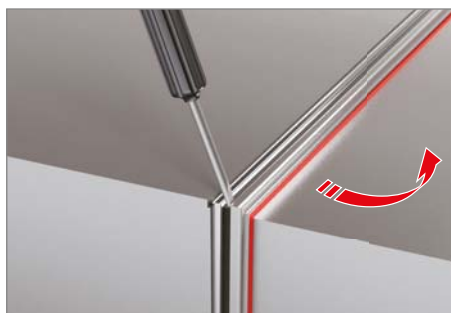
* Prompt delivery



** Prompt delivery in strips

Dimensions in mm.

PR 4A, the instantly replaceable and easily dismantable wiper (Patented)



It is made of 3 independent elements: a solid metal profile on the telescopic cover box, then a removable metal profile and finally a seal designed to clean the cover.

The seal offers various technical features depending on the working conditions to which it is subject.

Telescopic covers equipped with **WIPER PR4A** allow the user to independently replace the wiper profile.



CHARACTERISTICS OF MATERIALS

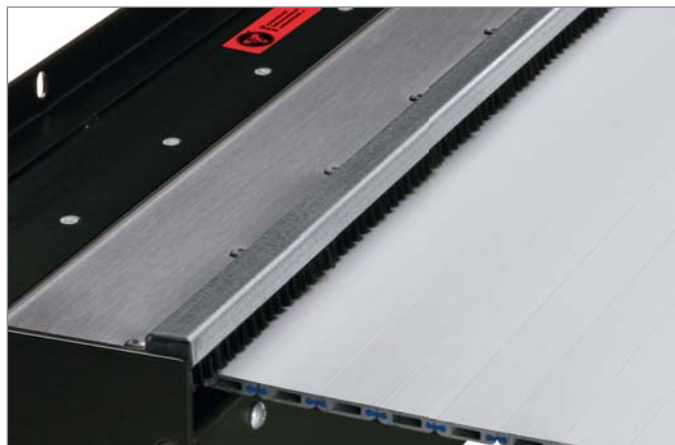
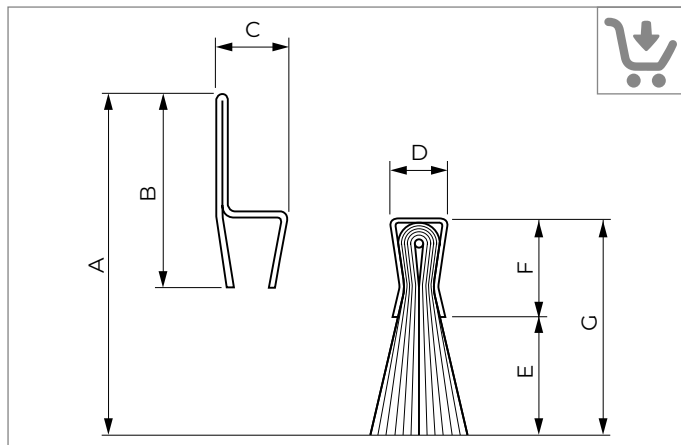
MATERIALS	HEAT RESISTANCE		SYNTHETIC OIL RESISTANCE		MINERAL OIL RESISTANCE		VEGETABLE OIL RESISTANCE		WEAR RESISTANCE	
	Momentary contact °C	Continuous °C	Excellent	Good	Excellent	Good	Excellent	Good	Excellent	Good
NBR	250	-20 ÷ +100		•		•		•		•
Polyurethane	200	-30 ÷ +90	•		•			•	•	
VITON®	1000	-20 ÷ +280	•		•			•		•
Polymeric GM2319 (red) for working with coolants	200	-30 ÷ +90	•		•			•	•	
Polymeric GM2357 (blue) for dry working	280	-30 ÷ +120	•		•			•	•	

LINEAR BRUSHES WITH SUPPORT FRAME



➔ Also available via our online-shop: <https://shop.pei.it/en/4-brushes>

- Safe sealing against dust from base
- Prevention of system malfunctions due to overheating
- Long service life
- Special dimension and design possible
- Special shapes may be created
- The brush is easy to replace
- The support frame is made of galvanized steel
- Prompt delivery in strips.



Code	A	B	C	D	E	F	G	Length	Bristle
SN1	32	21	17	14	9	9	18	1000	Nylon Ø 0,15
SN2	46	20	9	6	26	5	31	2000	Nylon Ø 0,15
SN3	72	32	15	10	40	10	50	2000	Nylon Ø 0,25
SN4	92	32	15	10	60	10	70	2000	Nylon Ø 0,50
SN5	112	32	15	10	80	10	90	2000	Nylon Ø 0,50
SN6	132	32	15	10	100	10	110	2000	Nylon Ø 0,50
S01	44	20	9	6	24	5	29	2000	Brass Ø 0,15
S02	74	20	9	6	54	5	59	2000	Brass Ø 0,15
S03	104	20	9	6	84	5	89	2000	Brass Ø 0,15



ROLL-UP COVERS WITH OR WITHOUT CANISTER

P.E.I. roll-up covers are normally equipped with our **patented system** of multiple springs.

This offers countless advantages:

- Extremely high speeds
- Resistance to high and low temperatures
- Up to 1,000,000 movements guaranteed
- Compact size
- Easy installation
- Constant tensioning.



CERAMIX BAND

Aerospace technology in machine tools: a potent and cost-effective innovation

Features of **CERAMIX** band:

- Band material covered by a high ceramic polymer coating
- It is highly resistant against the impact of hot shavings during dry-working
- It has an excellent abrasion resistance and shear strength and is recommended for the use of mineral oils
- CERAMIX band material has a thickness of 1,8 mm and weights 2 kg/sqm
- It is antistatic.

This kind of band can be used on all **P.E.I.** roll-up covers with mechanisms from 70 mm tube diameter.



CERAMIX LIGHT BAND

Identical resistance at half the weight

CERAMIX LIGHT offers all the characteristics of CERAMIX, but at a thickness of 0,9 mm and 1 kg weight per sqm.

- Antistatic
- Suitable for roll-up covers with mechanisms from 20 mm tube diameter.

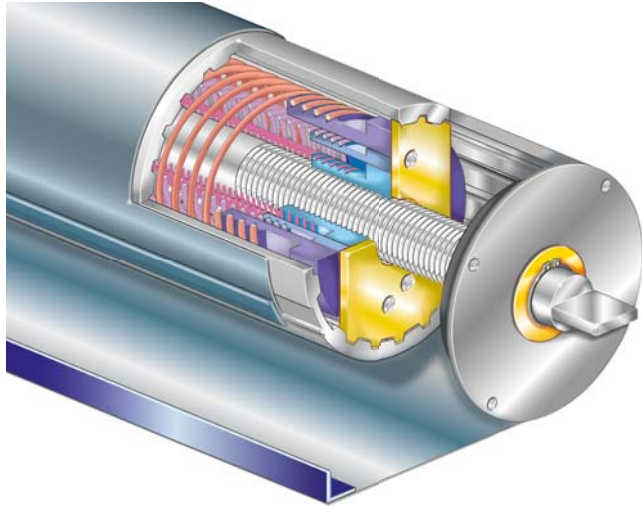
[watch on](#)  **YouTube**



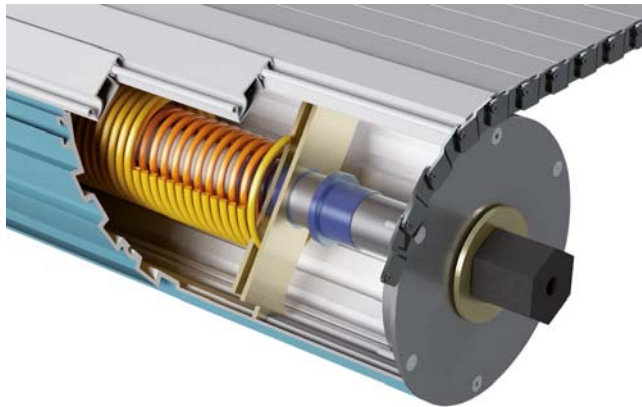


SURE-SPRING® MECHANISM (Patented)

The **P.E.I.** patented design known as **SURE-SPRING®** represents the most advanced level of technical innovation in the field of roll-up covers.



- Suitable for high speed operation
- The multiple springs remain coaxial
- The springs never intersect
- Reduced overall diameters
- Advancement speeds of up to 150 m/min
- Acceleration of up to 2 g
- 2,000,000 Movements guaranteed
- Secure attachment of the band to the tube, because no adhesive products are used
- Quick and easy maintenance
- Also suitable for use in work environments where strongly aggressive chemicals are applied.

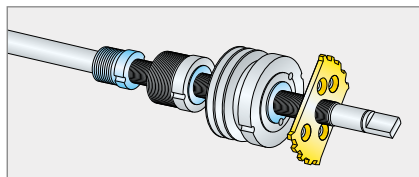


SURE-SPRING® MECHANISM - HP VERSION

The **SURE-SPRING® HP** winding mechanism is the answer to the elevated power required to wind up large size protective covers.

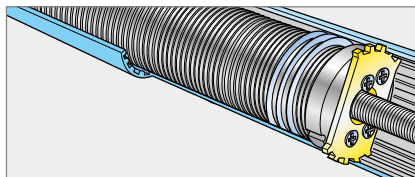
An optimal dimensioning of the springs guarantees the tensile force required for moving "J"-series apron covers.

Transmission



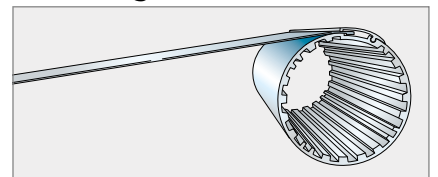
The rotary movement of the tube in relation to the fixed central shaft is transmitted by a sliding spline. This system compensates for the elongation of the multiple springs by moving the spring mounting point axially along a threaded shaft.

Innovative features



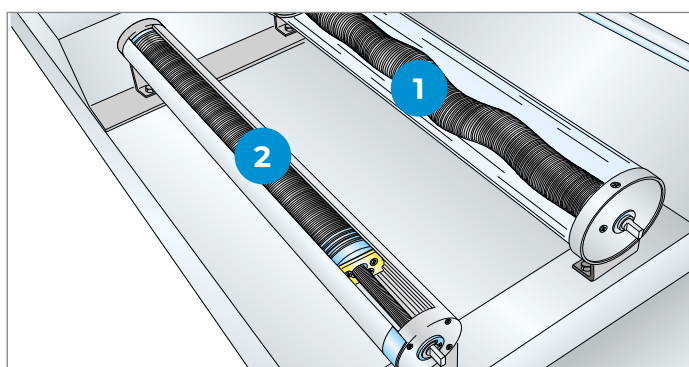
This new system allows the multiple springs to work according to an ideal geometry, keeping their coils properly spaced.

Fastening



This is the most reliable system for insuring a secure mechanical fastening between the band to the tube.

SURE-SPRING® Operating diagram



In **Mechanism 1 (traditional system)** the springs are rigidly attached to the fixed caps at the ends of the shaft.

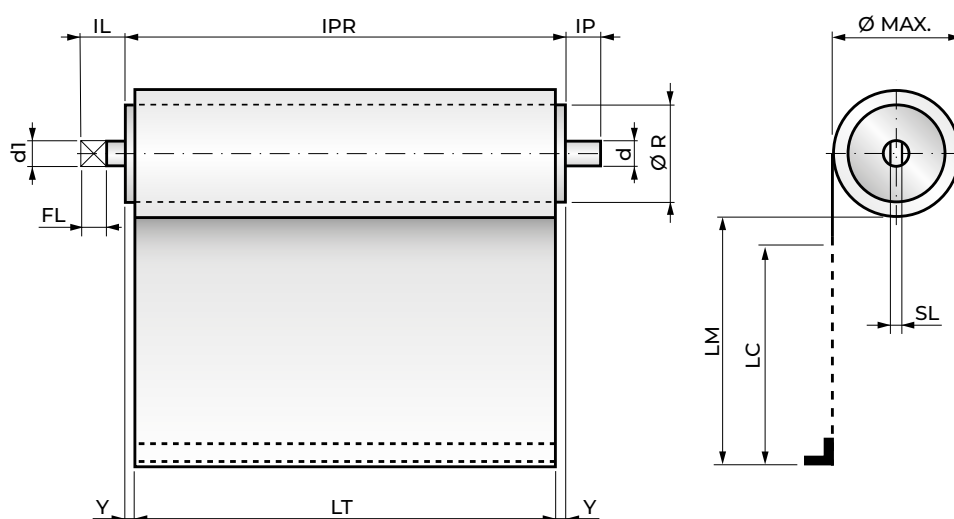
In this system the springs helically twist and snake while winding or unwinding, causing obvious problems of friction and wear between the coils as well as between the coils and the central shaft.

In **Mechanism 2 (SURE-SPRING® system)** the springs are attached to a special moving cap, which slides lengthwise while winding and unwinding, keeping the spring coils packed and concentric at all times.

This spring configuration avoids most of the wear mentioned above, allowing better performance and a much longer operating life-span for the spring mechanism.



ROLL-UP COVERS WITHOUT CANISTER



- Ø Max = Wound-up maximum diameter
- SL = Tab thickness
- LC = Stroke length
- LM = Max length
- LT = Band width
- Ø R = Winding roller diameter
- IPR = Overall width

The IPR overall dimension of the roll-up cover depends on the Y dimension, which is calculated by our engineers. Contact our engineering department for any questions you may have.

SHAFT SIZES

Standard Roll-up Covers

Ø ROLLER	dI	IL	FL	SL	d	IP
30	6	8	8	2.6	7	8
40-50-60-70-80-90-100-120	10	15	12	4	10	10

P.E.I. manufactures shafts according to customer's drawing.

SURE-SPRING® Roll-up Covers

Ø ROLLER	dI	IL	FL	SL	d	IP
39-52-71	10	15	12	4	10	10

LM		2 · Y =
from	to	
0	400	4
401	600	5
601	800	6
801	1200	8
1201	1600	10
1601	2400	14
2401	3000	18
3001	3850	22
3851	4700	26
4701	5550	32

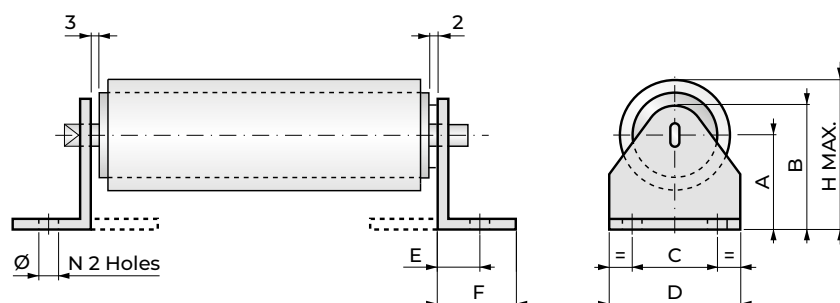
Formula for calculating the OVERALL WIDTH

$$IPR = LT + 2Y$$

Example:

LM = 1000 LT = 500 2Y = 8
OVERALL WIDTH = 508

DIMENSIONS FOR STANDARD SUPPORTS



Code	A	B	C	D	E	F	Ø	Hmax	Material
33	33	45	26	40	11	18	6,5	59	galvanized Fe 15/10
50	50	62	26	40	11	18	6,5	93	galvanized Fe 15/10
60	60	76	36	50	15	22	6,5	112	galvanized Fe 20/10
80	80	96	42	60	17	26	6,5	151	galvanized Fe 25/10
119	119	136	54	106	37	70	10	225	galvanized Fe 40/10

Dimensions in mm.

Formula for calculating max. Ø

$$\text{Ø MAX.} = 2 \cdot \sqrt{\frac{L \cdot s \cdot 1,20}{\pi} + r^2}$$

L = MAX. LENGTH TO WIND
s = BAND THICKNESS*
r = ROLLER Ø/2

(* You find the [materials list](#) on our website www.pei.it)

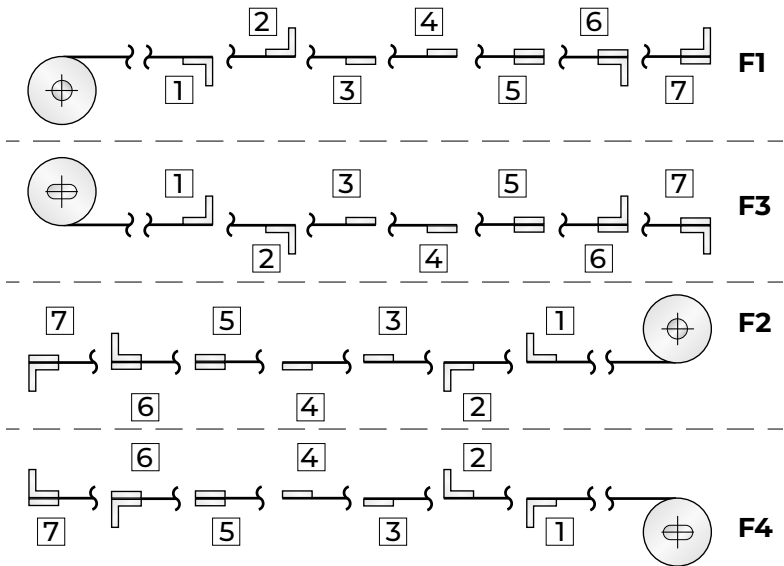


Installation

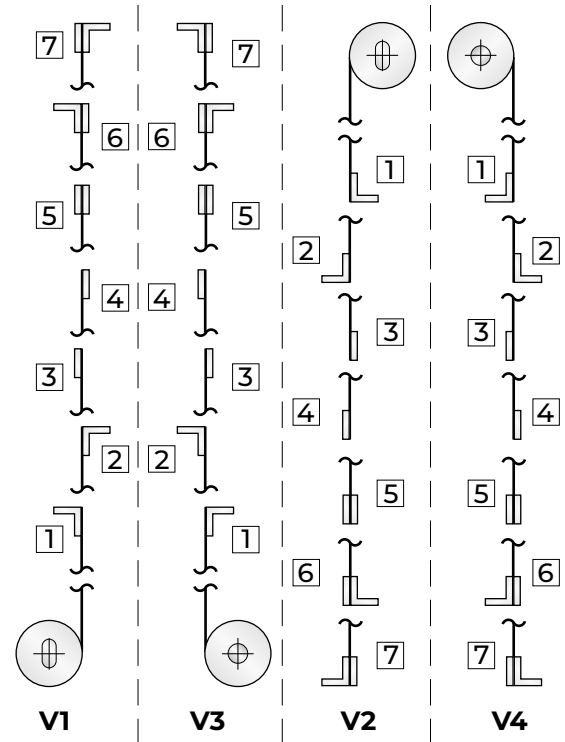
This diagram is valid for all Roll-up Covers without canister, and shows:

- Terminal type
- Band output direction
- Terminal position on the band
- View of shaft/tab

Horizontal and frontal work positions



Vertical work positions



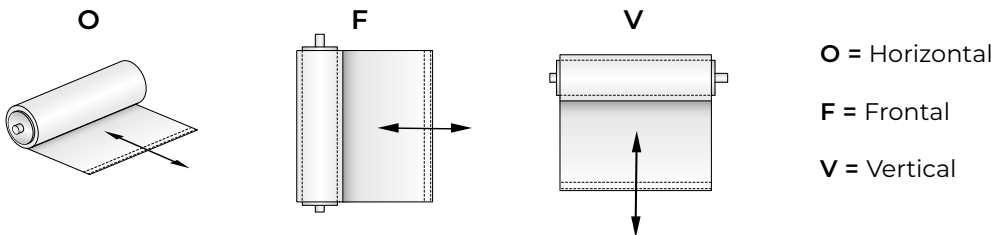
Fastening terminals

The terminals consist of strips and angles with holes according to the customer's requirements.
Terminal materials: Aluminum, Steel.

B x H	
14x2	25x3
14x3	25x5.5
15x2	28x2
15x3	28x3
18x2	30x2
20x2	30x3
20x3	40x3
25x2	50x8

L x L x S	
15x15x2	
15x15x3	
20x20x2	
20x20x3	
25x25x2	
25x25x3	
30x20x5.5	
30x30x2	
30x30x3	

Work positions

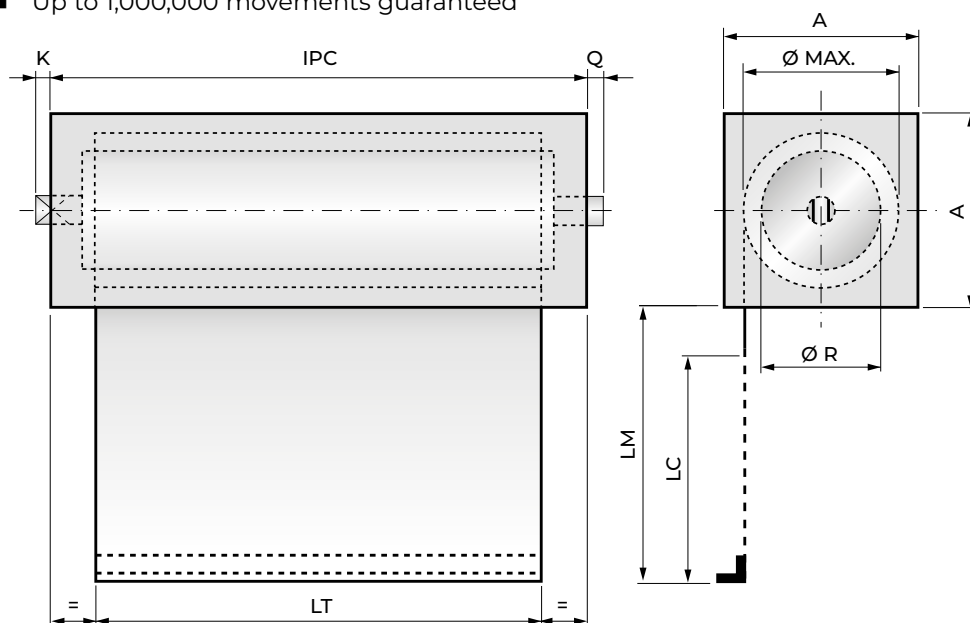




ROLL-UP COVERS WITH CANISTER

Enclosing the roller into a canister offers many advantages:

- Attractive appearance
- Wide variety of fastening systems
- Up to 1,000,000 movements guaranteed



Canisters A x A
40 x 40
50 x 50
60 x 60
70 x 70
80 x 80
90 x 90
100 x 100
110 x 110
120 x 120
130 x 130
140 x 140
150 x 150

- A** = Canister dimensions
Ø Max = Wound-up maximum diameter
LC = Stroke length
LM = Max length
LT = Band width
Ø R = Winding roller diameter
IPC = Overall width with canister

The IPC overall dimension of the roll-up cover depends on the K and Q dimensions, which are calculated by our engineers. Contact our engineering department for any questions you may have.

Formula for calculating the minimum canister size = DC

$$DC = \text{Ø MAX} + 8$$

Canister material	K	Q	Z*
Steel	10	7	13
Stainless steel	10	7	13

Z* = Fixed coefficient

Formula for calculating the OVERALL WIDTH with Steel and Stainless Steel canister

$$IPC = LT + Z + 2Y* + \left(\frac{LM}{100} \right)$$

Example with Steel canister:

LT= 500 2Y= 8 LM =1000

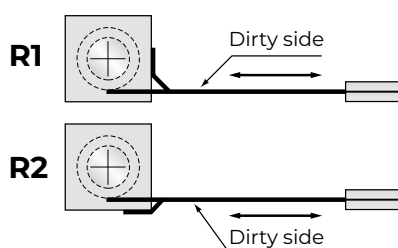
LM/100 =10 Z= 13

IPC = 531

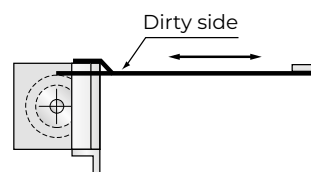
(* see 2Y table on page 22)

Wiper

This diagram shows the 2 ways to install the wiper to the canister:



Example for assembling code



Working position	F1
Terminal fastening	2
Canister fastening	T5
Wiper position	R2

Dimensions in mm.

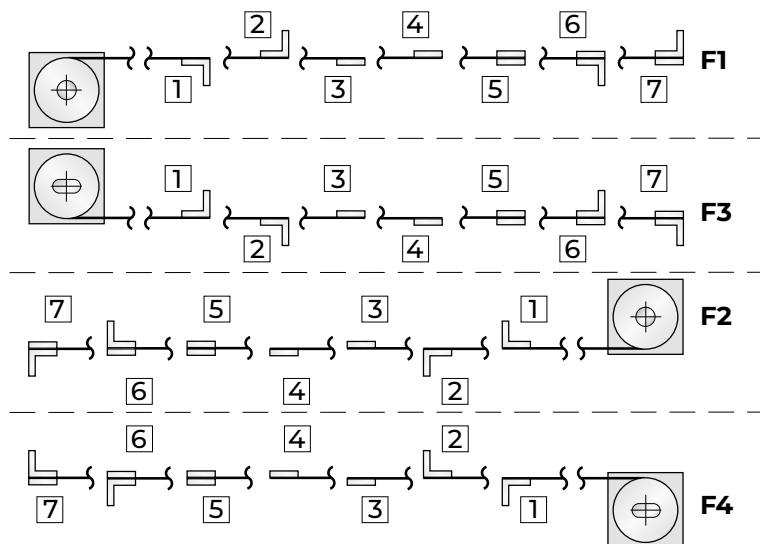


Installation

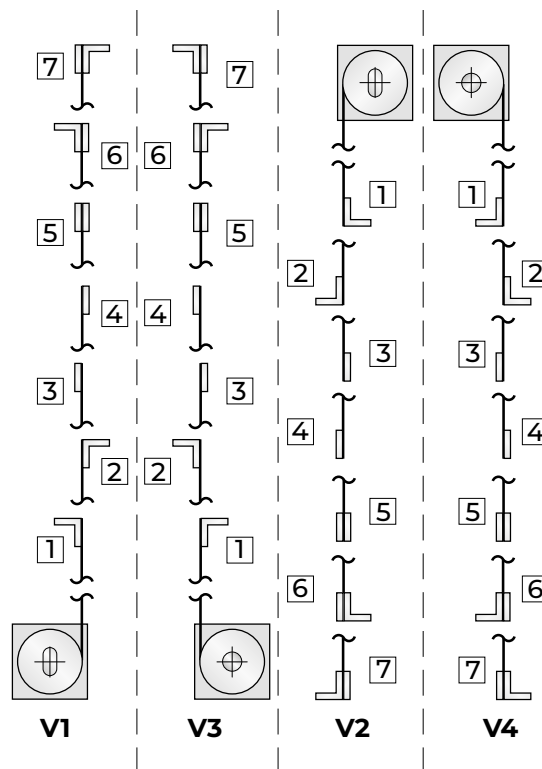
This diagram is valid for all Roll-up Covers with canister, and shows:

- Terminal type
- Terminal position on the band
- Band output direction
- View of shaft/tab

Horizontal and frontal work positions



Vertical work positions



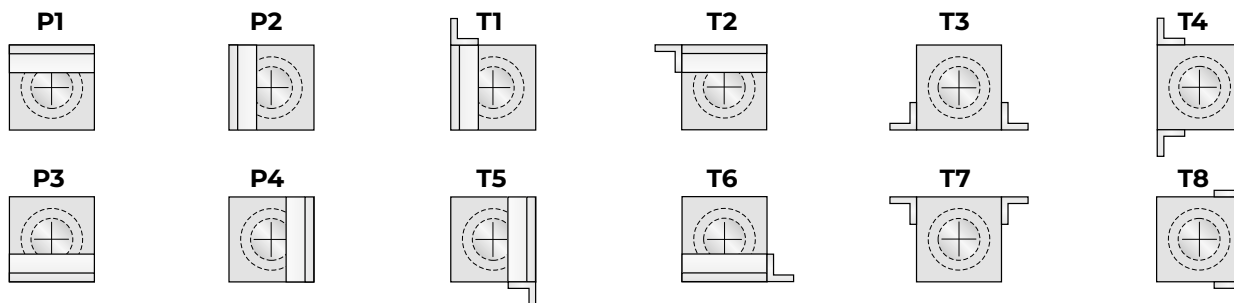
Fastening terminals

The terminals consist of strips and angles with holes according to the customer's requirements. Terminal materials: Aluminum, Steel.

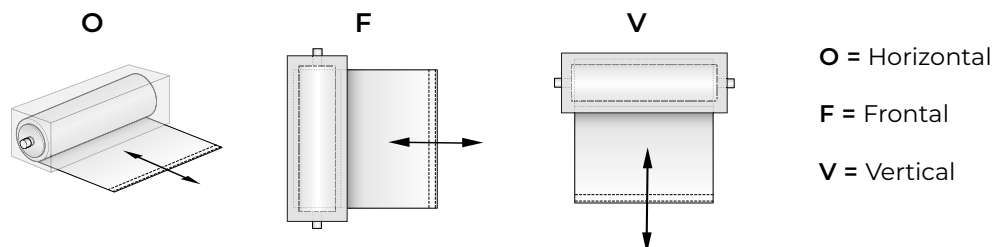
B x H		L x L x S
B	H	
14x2	25x3	15x15x2
14x3	25x5.5	15x15x3
15x2	28x2	20x20x2
15x3	28x3	20x20x3
18x2	30x2	25x25x2
20x2	30x3	25x25x3
20x3	40x3	30x20x5.5
25x2	50x8	30x30x2
		30x30x3

Standard canister mounting systems

To select the most suitable mounting system, we recommend placing the fastening variants shown over the selected roller variant you have chosen, without turning the former.



Work positions

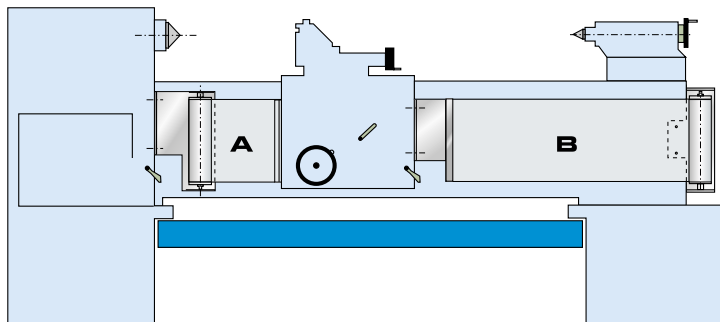


Dimensions in mm.



ROLL-UP COVERS FOR LATHES

P.E.I. roll-up covers for lathes respond to the need to limit hazards caused by movement of the lead screw and/or spline shaft (Conforming to norm for Machinery Directives 2006/42/CE).

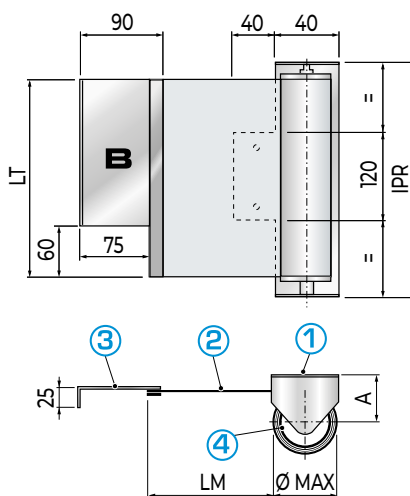
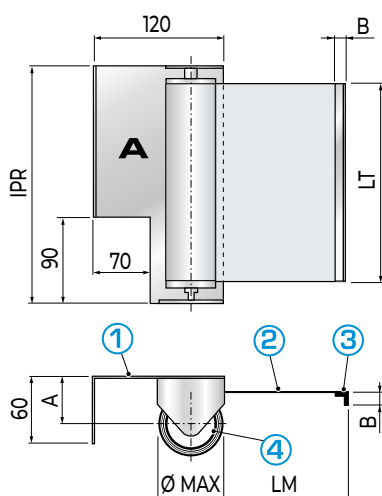


P.E.I. roll-up covers for lathes offer the following advantages:

- Ease of installation
- Adaptable to any type of lathe
- Compact size
- Shatter-proof in case of accidental breakage.

This is a kit designed to protect the machine operator from the lathe's lead and draw spindles and to prevent direct contact with the machine parts in motion.

The system consists of two separate roll-up covers that have to be attached to the two sides of the cross slide and to the machine base of the corresponding side.



① ③ BRACKETS

The ID codes:
LT150LM1200- LT200LM1500-
LT200LM2000- LT250LM3000
are of galvanized steel.

The ID codes:
LT300LM4000- LT350LM5000-
LT400LM6000- LT450LM7000
are black painted

② BAND

of coolant and oil resistant fabric

④ RETURN MECHANISM

with single or multiple springs

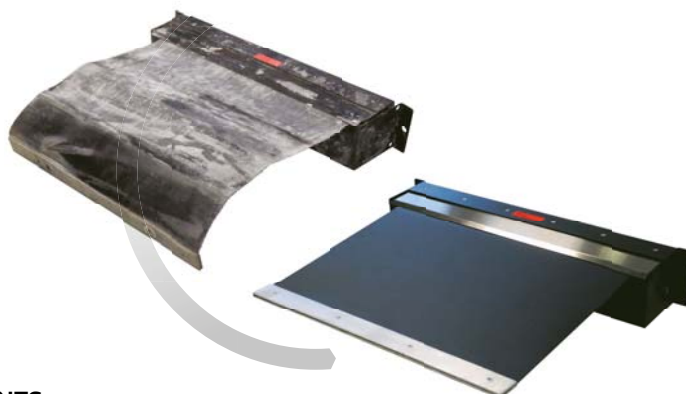
STANDARD SIZE

Legend	Description	ID code							
		LT150LM1200	LT200LM1500	LT200LM2000	LT250LM3000	LT300LM4000	LT350LM5000	LT400LM6000	LT450LM7000
LT	Band Width	150	200	200	250	300	350	400	450
LM	Max. Length	1.200	1.500	2.000	3.000	4.000	5.000	6.000	7.000
Ø MAX	Max. Diameter	48	52	62	83	100	121	141	144
A	Distance between supports	33	50	50	50	60	80	80	80
BxB	Raw aluminium corner	15x15x3	15x15x3	15x15x3	15x15x3	15x15x3	15x15x3	20x20x3	20x20x3

DIMENSIONS IN MM ■ OVERALL GUARD SIZE (IPR) = LT + 30 ■ PROMPT DELIVERY

ROLL-UP COVERS OVERHAULING

- Overhaul of all types of roll-up covers and aprons with or without canister
- Replacement of the damaged apron or band of any kind
- Replacement of the winding mechanism
- Replacement of wipers or any other component if worn-out
- Cleaning of all surfaces to original finish
- If the roll-up cover should be too damaged, we can build a new one
- Short delivery time.



INSPECTION OF P.E.I. STAFF FOR ON-SITE MEASUREMENTS

Fill in the form available on our website to receive a tailored offer of the most suitable Roll-up Cover according to your project requirements

[click here](#)



X-Y 4R SHIELD

The **X-Y 4R** roll-up shield is a truly effective solution to the problem that occurs in horizontal machining centers when separating the tool working area from the motor area.

It allows the spindle to move freely in all directions and uses four (Patented) SURE-SPRING® roll-up covers.

The **X-Y 4R** shields are designed for accelerations up to 1,5g and speed up to 90 m/min.

For higher applications, please contact our engineering department.



APPLICATION EXAMPLES



[watch on](#)  YouTube



X-Y SP-2R SHIELD

The **X-Y SP-2R** shield represents the most reliable system for protecting the work area, on the horizontal and vertical machining centers, in an environment where a large quantity of hot shavings is produced.

As shown in the picture, this system is mounted on a (patented) SHEET-POCKET™ Steel Cover on the Y-axis and two rollers on X-axis with Ceramix bands (other types of bands are available depending on requirements).

The design of this system takes into account ease of access for inspection as well as quick and easy assembly.

APPLICATION EXAMPLES





MOTOR ROLL-UP COVER

Roll-up cover for vertical application

All P.E.I. apron covers can be equipped with a motor and serve as a dividing wall between the working area and the machine operator. This allows fast changing of the tool or the workpiece.

The apron cover works in a vertical position and can be designed with or without canister. The motor can be installed on the left or the right side, vertically or horizontally.

All "J"-series apron covers are impact tested according to ISO 16090-1:2017.

Our design department is pleased to help you with any questions.

VERSION WITH CANISTER AND WITHOUT CANISTER



APPLICATION FOR THE TOOL CHANGE



EXAMPLE OF A COVER WITH CANISTER AND SLIDE BEARING





WALL ROLL-UP COVER

Frontal roll-up covers for machine tools

WALL ROLL-UP COVER is a dividing wall between the working area and the machine room in large lathes. **WALL ROLL-UP COVER** consists of special **P.E.I.** roll-up covers.

The X-axis is equipped with an aluminium "J"-series apron, the Y-axis with a telescopic SHEET-POCKET™ cover with way wipers.

All "J"-series apron covers are impact tested according to ISO 16090-1:2017.

Our design department is pleased to help you with any questions.



APPLICATION EXAMPLE





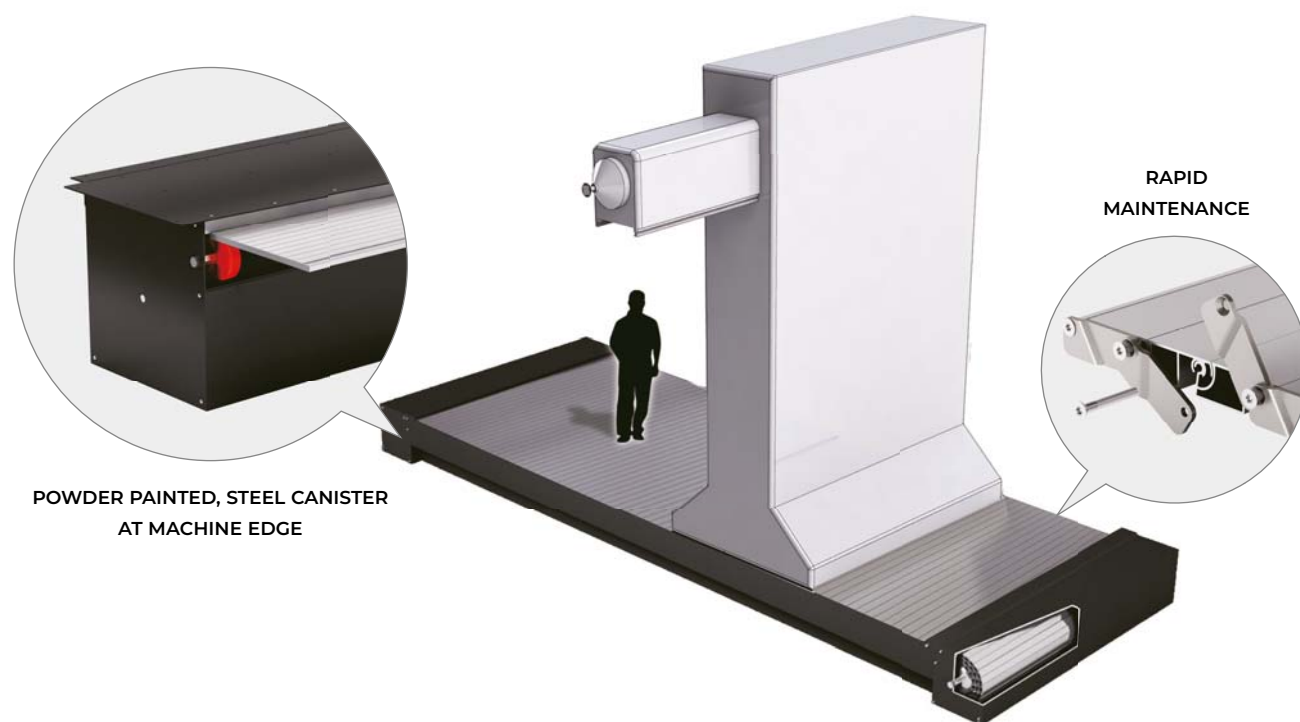
PIT ROLL-UP COVER

Walk-on roll-up covers for horizontal application

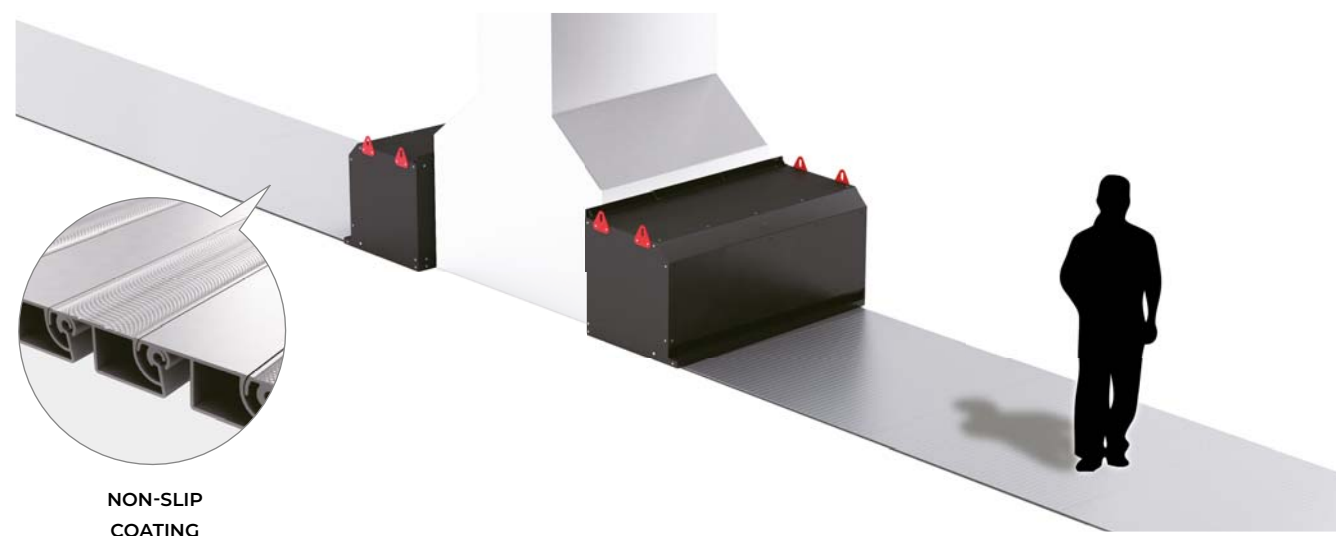
PIT ROLL-UP COVER closes the upper part of the pit of machines whose base (or other parts) lie below the tread. By use of this horizontally installed apron, current accident prevention regulations can be complied with. By installing the "J"-series apron cover, the machine pit / base can be walked-on at any time.

- Suitable for wet and dry machining
- Speed up to 120 m/min
- Guaranteed service life: 1.000.000 movements
- Entirely made of metal
- The side facing the flying chips has an absolutely even surface
- Non-slip finish tested according to **UNI EN 16165:2021** and certified as **R11**. The tests have been run using slip-resistant footwear classified as **SR**
- Cleaned by way wipers
- The mechanical winding mechanism produces no impact or vibration noise
- The lateral apron guide is designed in such a way that the chips fall into the chip conveyor
- Closed lateral steel plates produce a "chain effect"
- Modular system with single exchangeable elements
- Joint protected by an integrated labyrinth.

VERSION WITH CANISTERS INSTALLED AT THE BEGINNING OF THE PIT



VERSION WITH CANISTERS ATTACHED TO THE MACHINE COLUMN





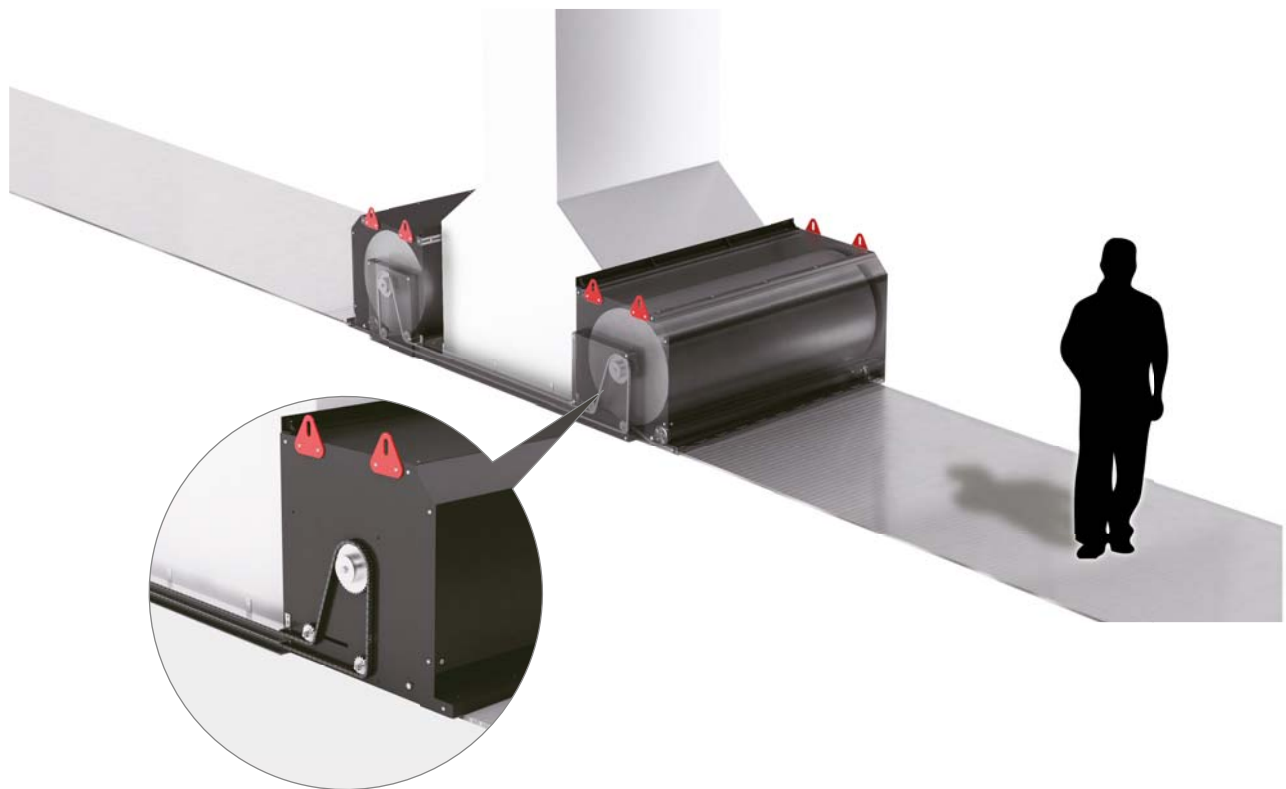
CHAIN ROLL-UP COVER

Walk-on roll-up covers, horizontal application for large runs

P.E.I. roll-up covers with chain movement (patented system).

They have the essential feature of keeping the strip perfectly fixed while the machine is running.

- The band is fixed relative to the floor, allowing people to cross the machine trench at any time even while the machine is in operation
- The winding tubes incorporated in the canisters are attached to the machine column
- A system compensating the diameter automatically allows for a concerted unwinding of the aprons
- The dimensions, layout, and speed of travel are developed for each order and can meet your exact needs
- Upon request, we can design a system using DC or pneumatic motors.



APPLICATION EXAMPLE





CORNER ROLL-UP COVER JM (Patented)

Roll-up cover for horizontal / vertical application

CORNER ROLL-UP COVER JM is a new **P.E.I.** application: a roll-up cover that protects more than one side, both vertically and horizontally.

It is rolled up using a **P.E.I.** winding mechanism driven by a motor with integrated side chains fixed to the apron, creating a rack effect.

This roll-up cover is provided with a new, 15.5 mm thick **JM** aluminium profile.

All "J"-series apron covers are impact tested according to ISO 16090-1:2017.



It is possible as a standard to equip the cover with **illumination** inside



Option of viewing panel in versions:

- transparent
- tinted for welding work
- tinted for laser working

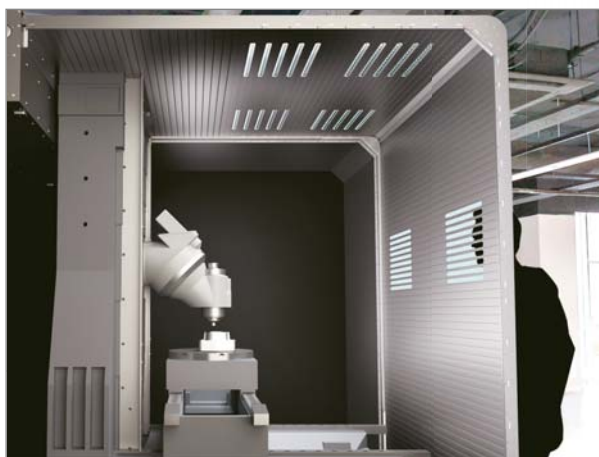
(after specification of equipment type and radiant source)



[watch on](#)  **YouTube**



APPLICATION EXAMPLES





EXTRUDED APRONS

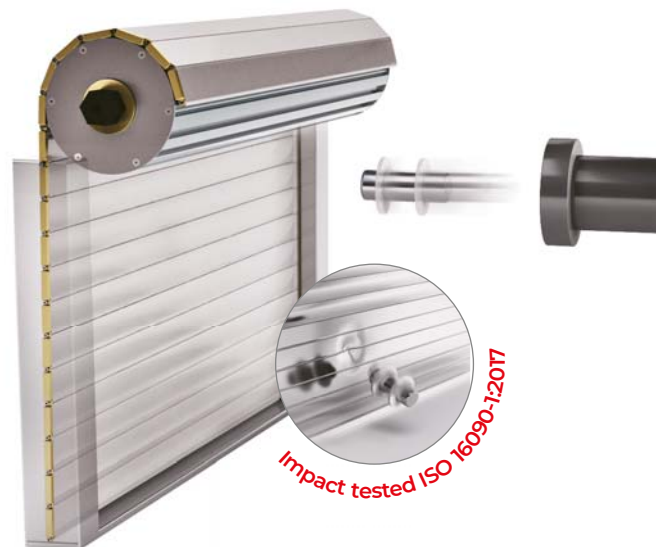
Extruded aprons are particularly robust: they are used where maximum protection of the guides from hot chips is required.

Their functioning may be "drop-down" or by **P.E.I.** roll-up mechanism.

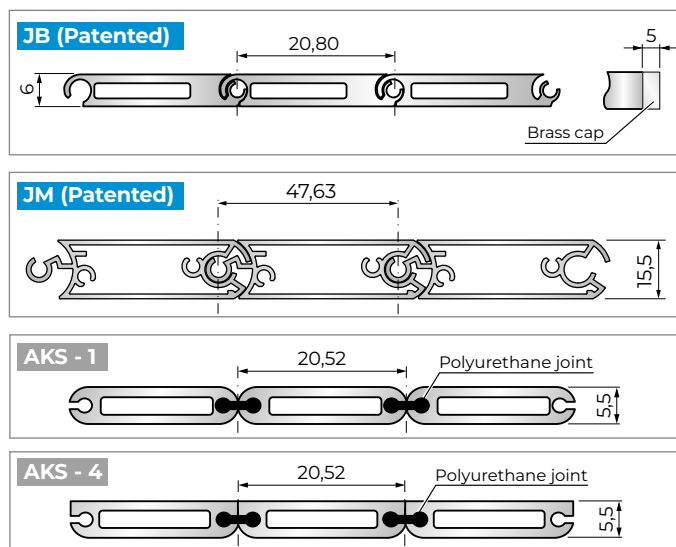
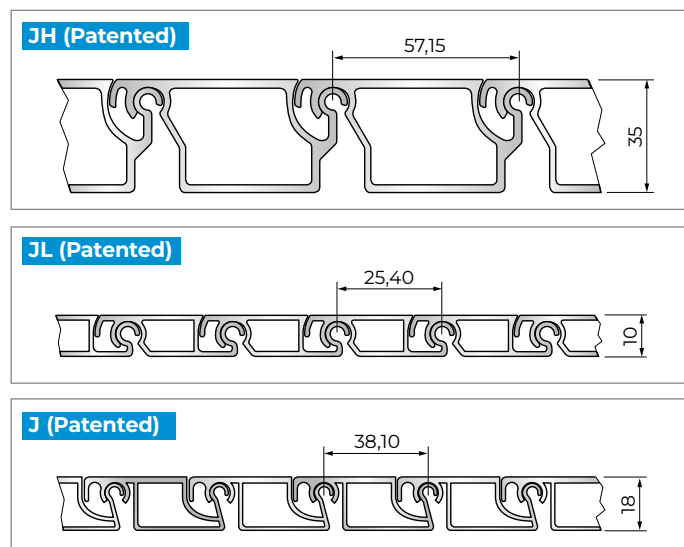
MATERIAL: Anodized silver aluminum

MAX. FEASIBLE WIDTH: 6000 mm.

All "J"-series apron covers are impact tested according to ISO 16090-1:2017.



AVAILABLE PROFILES SHAPES AND OVERALL DIMENSIONS



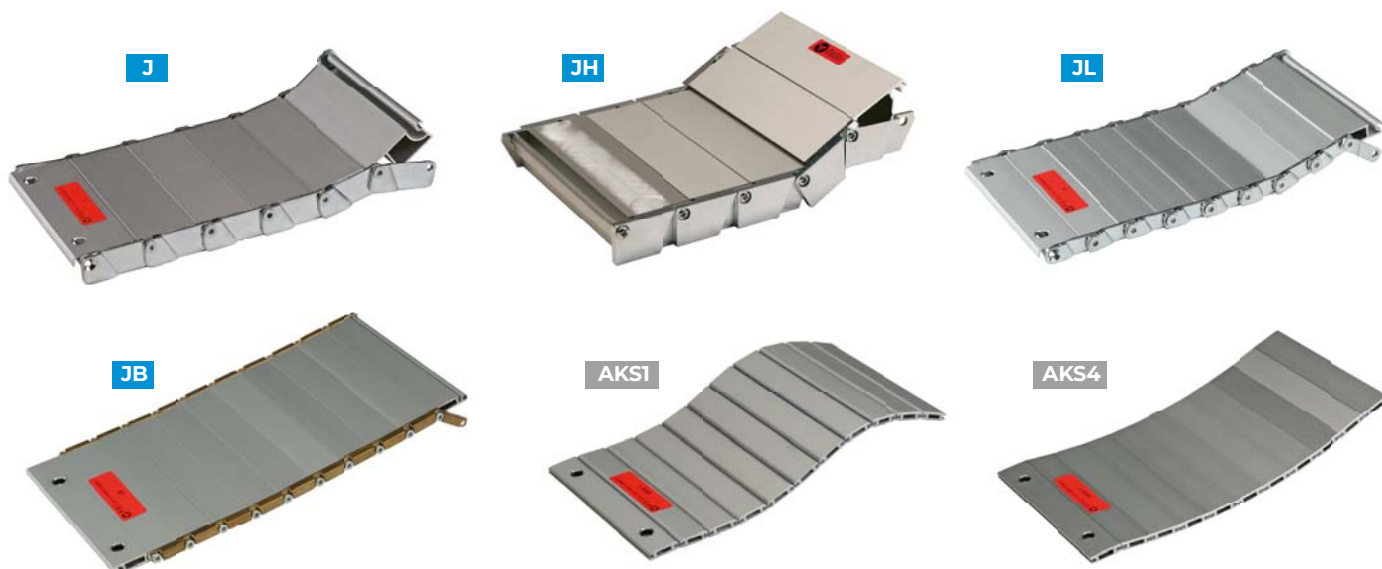
Dimensions in mm.

CODE	Minimum winding diameter		Cover weight	Cover cleaning	Bending strength, support distance*		Max. charge permitted	Impact tested ISO 16090-1:2017	Anti-slip treatment	Traction strength kN/m
	With upper roller	With lower roller			(90 Kg)	(150 Kg)				
	mm	mm			mm	mm	kg each wheel Ø100			
JH	200	200	25,0	Wiper	4500	4000	75	230	Upon request	2
JL	100	100	12,2	Wiper	1200	1000	50	90	Upon request	2
J	150	150	12,5	Wiper	2200	1750	50	150	Upon request	2
JB	/	60	9,5	Wiper	750	600	50	150	Not available	2
JM	/	150	14,8	Wiper	2250	1850	50	120	Not available	2
AKS1	50	50	9,0	Brush	750	600	/	/	Not available	1,2
AKS4	/	50	9,0	Wiper	750	600	10	/	Not available	1,2

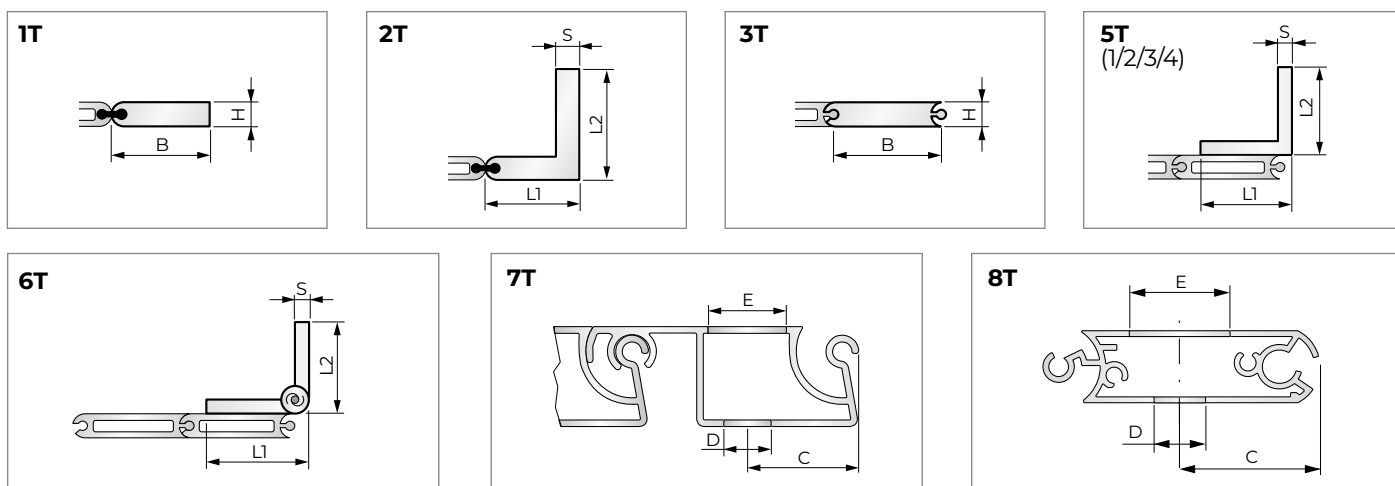
* Max. bending 1% of the support distance



SOME AVAILABLE PROFILES



STANDARD END MOUNT PROFILES



NOTE: We can provide end mountings to match customer drawings upon request.

END MOUNT DIMENSIONS

End mount code	L1xL2xS	BxH	C	D	E	Material	Description	Cover code
1T		25x5,5				Al	Flat	AKS-1 / AKS-4
2T	20x30x5,5					Al	Corner	AKS-1 / AKS-4
3T		20x6				Al	Cover	JB
5T/1	15x15x3					Al-Stl	Corner	JB
5T/2	20x20x3					Al-Stl	Corner	JB
5T/3	30x30x3					Al-Stl	Corner	J / JB / JL / JM
5T/4	40x40x5					Ac	Corner	J / JH / JM
6T	30x30x2					Ac	Stl hinge	AKS-1 / AKS-4 J / JL / JH / JB / JM
7T	Drilling upon request only		18	ø 5,50	ø 10	Al	Cover	JL
			20	ø 8,50	ø 14			J
			35	ø 13	ø 20			JH
8T			30	11	22	Al-Stl	Corner	JM

Al = Aluminium Stl = Steel

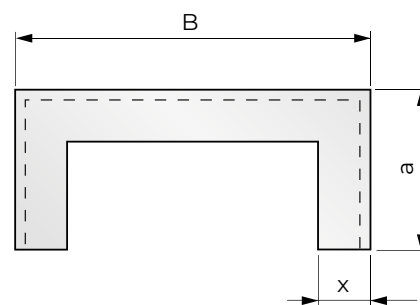
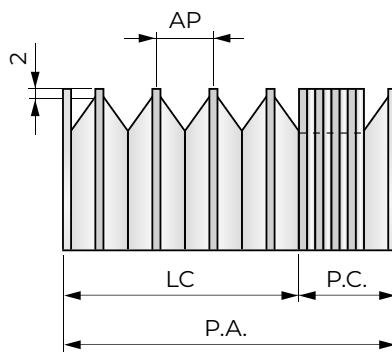
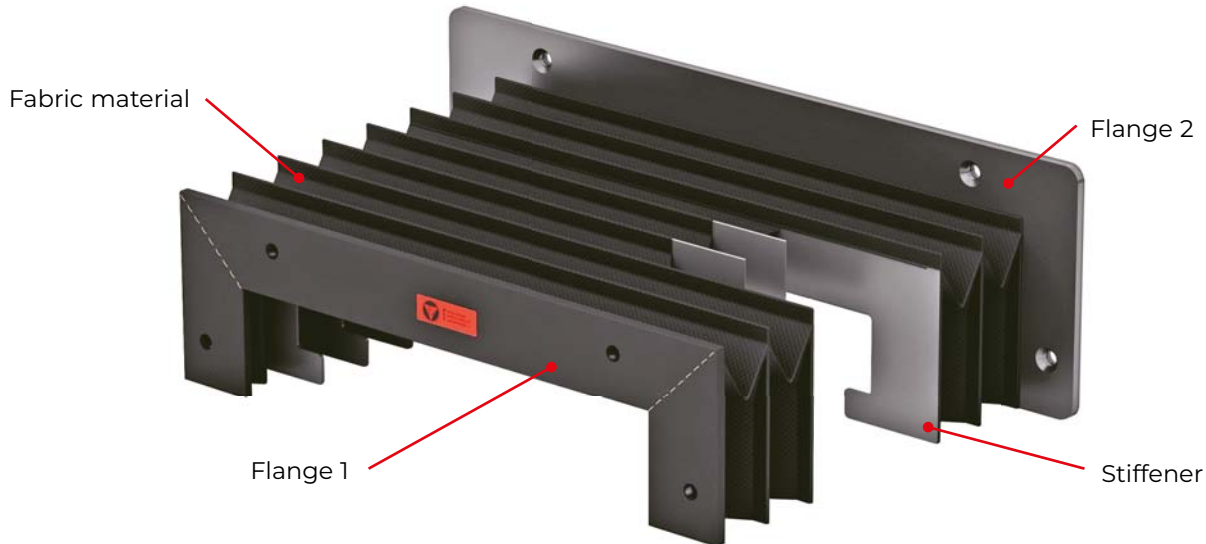
Dimensions in mm.



THERMIC-WELDED STANDARD COVERS

The **P.E.I.** thermic-welded standard covers guarantee optimal protection for any type of machine tool thanks to the different shapes and the high-quality of the materials.

The selected materials are wear-proof and heat-resistant, making the standard **P.E.I.** thermic-welded covers ideal for protecting the parts of machine tools.



P.A. = Open length
P.C. = Closed length
LC (Stroke) = Open length - Closed length

B = Outside width
a = Outside height
x = Fold height

Formula for calculating the CLOSED LENGTH

AP = Opening of 1 fold = $x \cdot 2 - 8$
SM = Fabric thickness *
SS = Stiffener thickness *
SF = Flange thickness *
NP = Number of folds = $\frac{P.A.}{AP} + 2$
P.C. = $(SM \cdot 8 + SS) \cdot NP + (SF \cdot 2)$

* See materials list on page 38.

This data sheet shows only one type of our thermic-welded covers.
 Contact our engineering department for other types.

Dimensions in mm.

Example:

Given that: Fold height = 15 mm
 Open length = 1000 mm

Opening of 1 fold = $15 \times 2 - 8 = 22$

Number of folds = $\frac{1000}{22} + 2 = 48$

Closed length = $(0,25 \times 8 + 1^{**}) \times 48 + (2^{***} \times 2)$

Closed length = $3 \times 48 + 4 = 148$

Closed length = 148 mm

* We hypothesize the fabric material with code "TEMAT015" (see materials list on page 38)
 ** We hypothesize that the stiffener is 1 mm thick
 *** We hypothesize that the flange is 2 mm thick (see materials list on page 38)



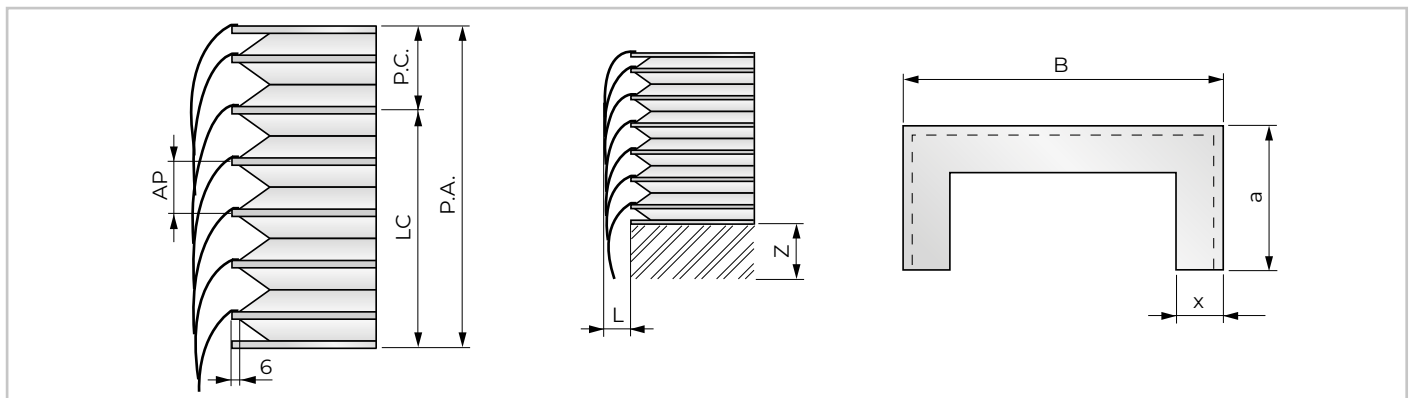
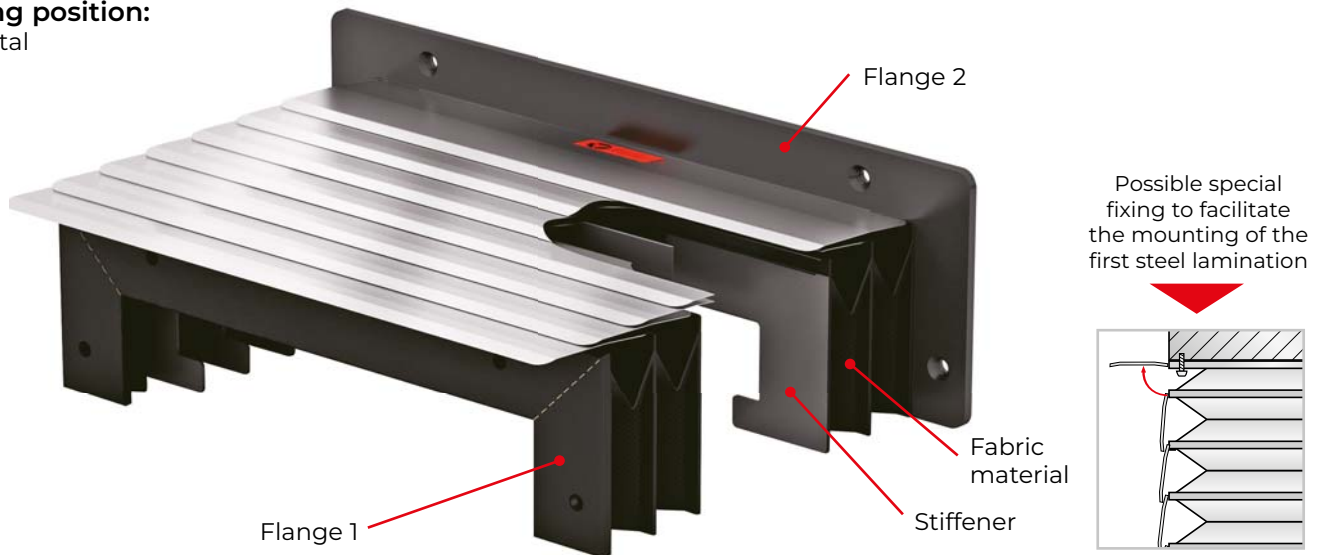
THERMIC-WELDED COVER WITH FIXED LAMINATIONS

Bellows with fixed laminations are used on every type of machine tool: often used in machining centres and metal-cutting machines.

Metal elements, called "laminations", protect the bellows from shavings and prevent damages.

Working position:

Horizontal
Vertical
Frontal



P.A. = Open length
P.C. = Closed length
LC (Stroke) = Open length - Closed length

B = Outside width
a = Outside height
x = Fold height

x(mm)	15	20	25	30	35	40	45
L(mm)	16	21	26	33	43	48	56
Z(mm)	45	55	65	75	85	95	105

Formula for calculating the CLOSED LENGTH

AP = Opening of 1 fold = $x \cdot 2 - 16$

SM = Fabric thickness *

SS = Stiffener thickness *

SF = Flange thickness *

NP = Number of folds = $\frac{P.A.}{AP} + 2$

P.C. = $(SM \cdot 8 + SS) \cdot NP + (SF \cdot 2)$

* See materials list on page 38

This data sheet shows only one type of our thermic-welded covers.
Contact our engineering department for other types.

Dimensions in mm.

Example:

Given that: Fold height = 45 mm

Open length = 1800 mm

Opening of 1 fold = $45 \times 2 - 16 = 74$

Number of folds = $\frac{1800}{74} + 2 = 27$

Closed length = $(0,35 \times 8 + 1^{**}) \times 27 + (3^{***} \times 2)$

Closed length = $3,8 \times 27 + 6 = 109$

Closed length = 109 mm

* We hypothesize the fabric material with code "TEMAT151" (see materials list on page 38)

** We hypothesize that the stiffener is 1 mm thick

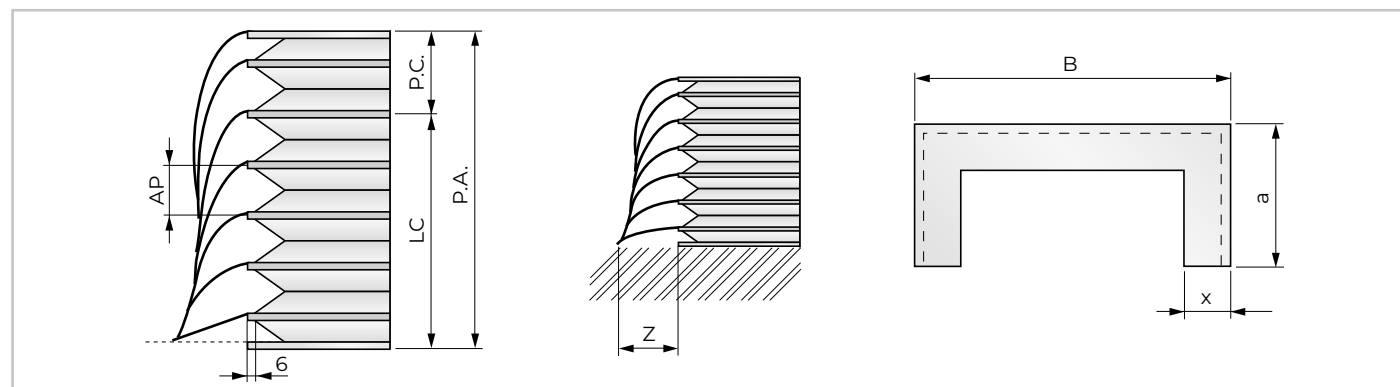
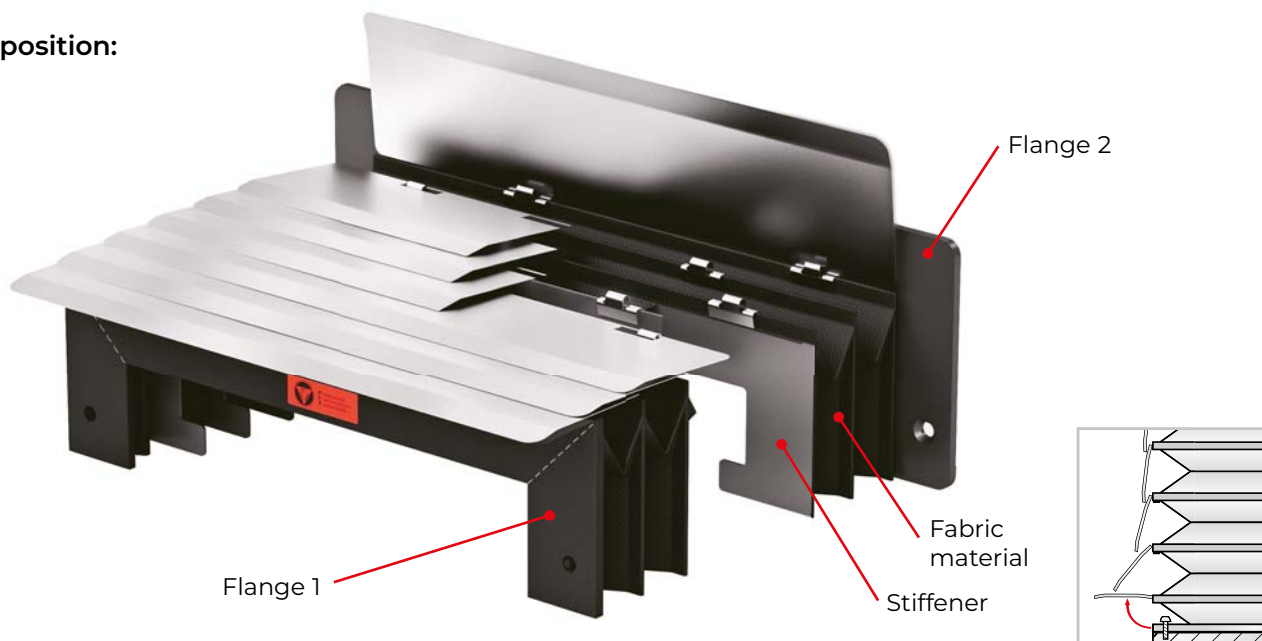
*** We hypothesize that the flange is 3 mm thick (see materials list on page 38)

THERMIC-WELDED COVER WITH FLEXIBLE LAMINATIONS

The **P.E.I.** thermic-welded standard covers are supplied also with flexible laminations, able to guarantee the same protection as the fixed ones, but they offer more flexibility in matching the supporting plan, thanks to their rotating capability.

Working position:

Vertical



P.A. = Open length
P.C. = Closed length
LC (Stroke) = Open length - Closed length
B = Outside width
a = Outside height
x = Fold height

x(mm)	15	20	25	30	35	40	45
Z(mm)	40	50	60	70	80	90	100

Formula for calculating the CLOSED LENGTH

AP = Opening of 1 fold = $x \cdot 2 - 16$
SM = Fabric thickness *
SS = Stiffener thickness *
SF = Flange thickness *
NP = Number of folds = $\frac{P.A.}{AP} + 2$
P.C. = $(SM \cdot 8 + SS) \cdot NP + (SF \cdot 2)$

* See materials list on page 38

This data sheet shows only one type of our thermic-welded covers.

Contact our engineering department for other types.

Dimensions in mm.

Example:

Given that: Fold height = 30 mm
Open length = 1000 mm

Opening of 1 fold = $30 \times 2 - 16 = 44$

Number of folds = $\frac{1000}{44} + 2 = 25$

Closed length = $(0,25 \times 8 + 1^{**}) \times 25 + (2^{***} \times 2)$

Closed length = $3 \times 25 + 4 = 79$

Closed length = 79 mm

* We hypothesize the fabric material with code "TEMAT015" (see materials list on page 38)

** We hypothesize that the stiffener is 1 mm thick

*** We hypothesize that the flange is 2 mm thick (see materials list on page 38)

Thermic welded covers material

The fabrics selected by **P.E.I.** have excellent mechanical bending and folding strength produced during machinings. They have as well excellent resistance to petroleum products, oils and heavy abrasion, minor welding splatters or hot materials.

Fabric material code	Description			Thickness (mm)	Heat resistance			Primary resistance characteristics
	Visible side	Fabric insert	Internal side		Momentary contact °C	Continuous		
						min. °C	max. °C	
TEMAT106	Ptfe	Polyester	Polyurethane	0,30	+200	-30	+120	Excellent resistance to oils and chemical products. No adhesive surface. Low friction coefficient. Excellent chemical inertia. Excellent resistance to abrasion and bending strength. Mainly used in grinding machines.
TEMAT015	Polyurethane	Polyester	Polyurethane	0,25	+200	-30	+ 90	Excellent resistance to petroleum products, oils and heavy abrasion. Excellent bending strength.
TEMAT151	Polyurethane	Polyester	Polyurethane	0,35	+200	-30	+ 90	
TEMAT164	Polyurethane	Kevlar*	Polyurethane	0,35	+350	-30	+180	Excellent resistance to petroleum products, oils and heavy abrasion. Excellent bending strength. Excellent mechanical strength. Kevlar also has excellent shear strength. Normally used when there is heavy mechanical stress, a large amount of sharp shavings, and at high temperatures. Self-extinguishing.
TEMAT165	Polyurethane	Nomex*	Polyurethane	0,36	+300	-30	+130	Excellent resistance to petroleum products, oils and heavy abrasion. Excellent bending strength. Excellent mechanical strength. Good resistance to minor welding splatter or hot material. Widely used in laser cutting machines. Self-extinguishing.
TEMAT169	Polyurethane	Panox*/Kevlar*	Polyurethane	0,33	+300	-30	+130	Excellent resistance to petroleum products, oils and heavy abrasion . Excellent bending strength. Excellent mechanical strength. Good resistance to minor welding splatter or hot material. It may be considered as the best fabric on the market for use in laser cutting machines. Self-extinguishing.
TEMAT017	PVC	Polyester	PVC	0,36	+100	-30	+ 70	Mainly used around heavy ambient dust, minor splatters of coolant and oil. Also suitable for use around acids.
TEMAT020	PVC	Polyester	PVC	0,25	+100	-30	+ 70	

* Kevlar, Panox and Nomex are registered trademarks.
Contact our engineering department for other materials and applications.

Stiffener materials

Stiffener material code	Description	Thickness (mm)	Notes
PVC 05	PVC	0,50 **	Outside width (B) up to 300 mm
PVC 10	PVC	1	Outside width (B) from 301 up to 700 mm
PVC 15	PVC	1,5	Outside width (B) from 701 up to 1500 mm

** NOT recommended for thermic-welded covers with laminations.

Flange materials

Flange material code	Description	Thickness (mm)
AL	Aluminium	2 - 3 - 4 - 5
INOX	AISI304	1 - 1,5 - 2 - 2,5 - 3
AC	Carbon steel	1 - 1,5 - 2 - 2,5 - 3 - 4 - 5
PVC	PVC	1 - 1,5 - 2 - 3

Lamination materials

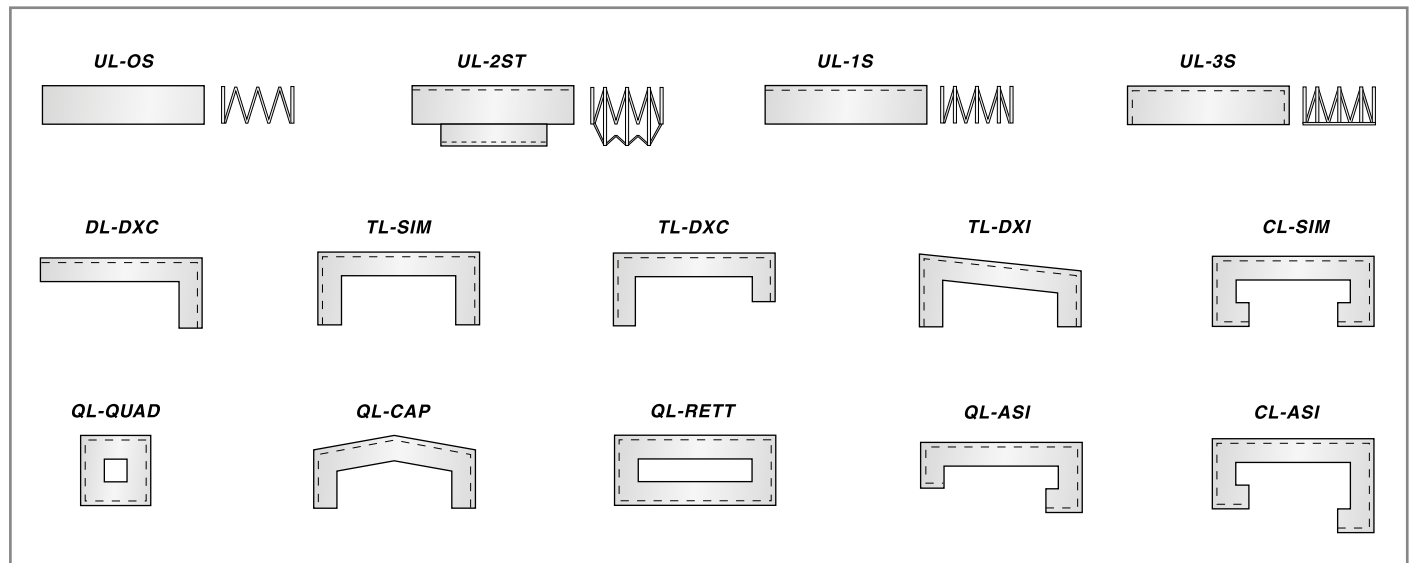
Lamination material code	Description	Primary applications
AL	Aluminium (Baked Enamel Finish)	For use around welding splatter, small and medium-sized hot shavings. Especially suitable for use around continuous sparks. Appropriate where lightweight materials are necessary.
INOX	Stainless Steel	In work environments with large shavings. Especially suitable for use around acids.

Dimensions in mm.



Shapes

Here below are only standard shapes of thermic-welded covers, other shapes available upon request.



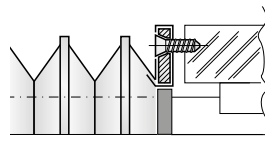
Code legend:

- UL-OS** = Folding fabric only
- UL-2ST** = Thermic-welded bellows with two weld seams and pull-out stop inside the bellows
- UL-1S** = One-sided bellow with PVC supports
- UL-3S** = One-sided thermic-welded bellows with three welded edges
- DL-DXC** = Thermic-welded bellows with two welded edges
- TL-SIM** = Thermic-welded bellows with three welded edges, symmetrical shape
- TL-DXC** = Thermic-welded bellows with three welded edges, asymmetrical shape
- TL-DXI** = Thermic-welded bellows with three welded edges, slanted shape
- CL-SIM** = Thermic-welded bellows with five welded edges, symmetrical shape
- QL-QUAD** = Thermic-welded bellow, square shape
- QL-CAP** = Thermic-welded bellow, roof shape
- QL-RETT** = Thermic-welded bellow, rectangular shape
- QL-ASI** = Thermic-welded bellows with four welded edge, asymmetrical shape
- CL-ASI** = Thermic-welded bellows with five welded edge, asymmetrical shape

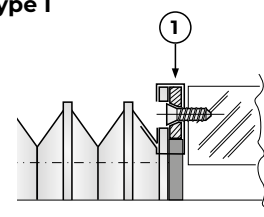
Flange Fastening Systems

- Fixing flange **Type A**: Flange covered by bellow fabric (without last support)
- Fixing flange **Type I**: Painted flange, fixed to last bellow support
- Solution with sheet steel, aluminium or PVC flange
- Shape and holes per customer drawings

Type A



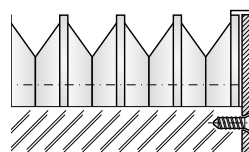
Type I



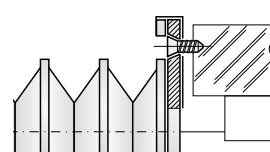
1 = Flange

- Fixing flange **Type B1**: Solution with connector flange protruding inside from the cover profile
- Fixing flange **Type B2**: Solution with connector flange protruding outside from the cover profile
- Solution with sheet steel, aluminum or PVC flange
- Shape and holes per customer drawings

Type B1

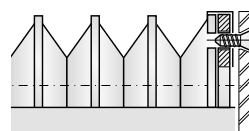


Type B2



- Painted flange, fixed to last bellow support with threaded bores
- Solution with sheet steel flange
- Shape and holes per customer drawings
- Threaded flange holes

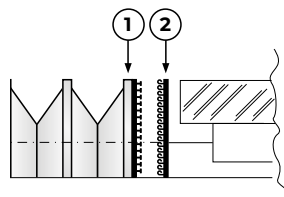
Type C



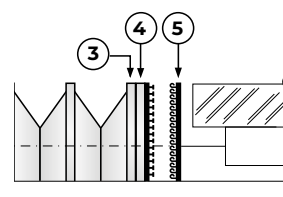
- Solution with rapid VELCRO connection.
- A PVC support acts as a flange, with VELCRO strips applied to the stiffener and directly to the machine.
- This solution offers:
 - Rapid application and removal of the cover
 - Low cost

Recommended for dry work environments

Type E



Type H

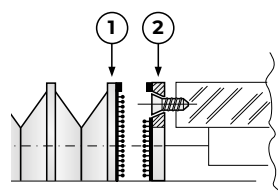


- 1 = PVC cover stiffener
- 2 = Strip of Velcro applied to the machine
- 3 = PVC stiffener
- 4 = Flange
- 5 = Strip of Velcro applied to the machine

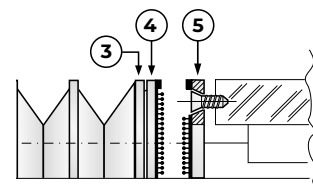
- Solution with STRONG HOLD rapid connection.
- Solution with sheet steel, aluminum or PVC flange. Shape and holes per customer drawings.
- This solution offers:
 - Rapid application and removal of the cover
 - Foam gasket strip provides a tight seal around the connection.

Recommended for wet work environments

Type F



Type G (Entire fold in PVC)



- 1 = PVC stiffener
- 2 = Flange
- 3 = PVC stiffener
- 4 = Flange
- 5 = Counterflange

Fill in the form available on our website to receive a tailored offer of the most suitable Flat Cover according to your project requirements

[click here](#)



BELLOWS FOR HOISTING PLATFORMS

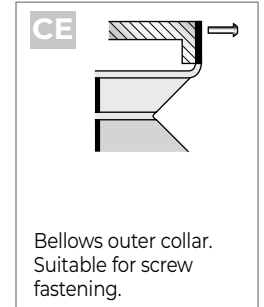
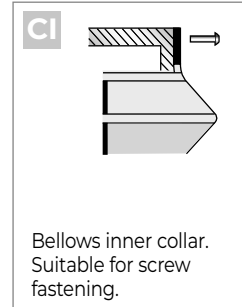
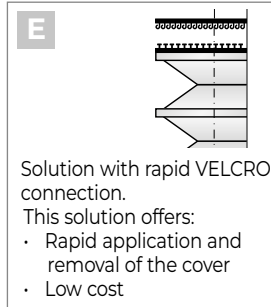
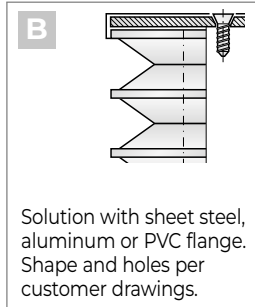
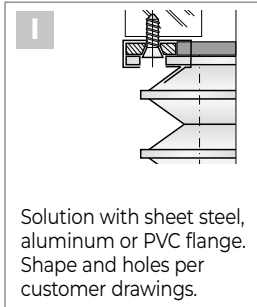
Hoisting platforms are often used in industrial or logistic areas, but are also used as undercarriages for medical equipment and wherever goods need to be moved.

The lifting area underneath the platform is exposed to dust, dirt or other foreign bodies, therefore it should be protected.

The bellows also act as safety guard, minimising the risk of injury to operators.



Standard systems for fastening bellows for lift tables



QUICK BOX BELLOWS (Patented)

This bellow for lifting platforms is supplied disassembled for easy on-site assembly

QUICK BOX BELLOW is supplied in separate elements that can be joined together by simple mechanical fasteners - without any tool - and then attached to the platform. The compact packaging results in significant savings in transport and storage.

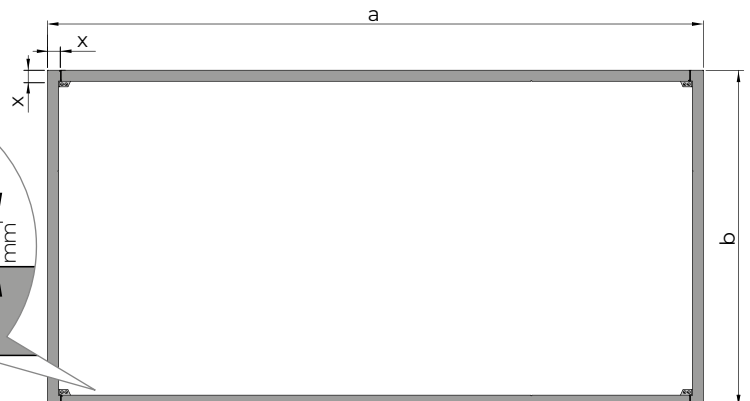
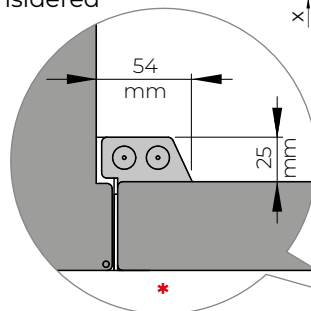
Available in yellow or black.



It is made according to the customer's drawing:

a - b - x = Sizes upon request

* = Internal space to be considered in design phase

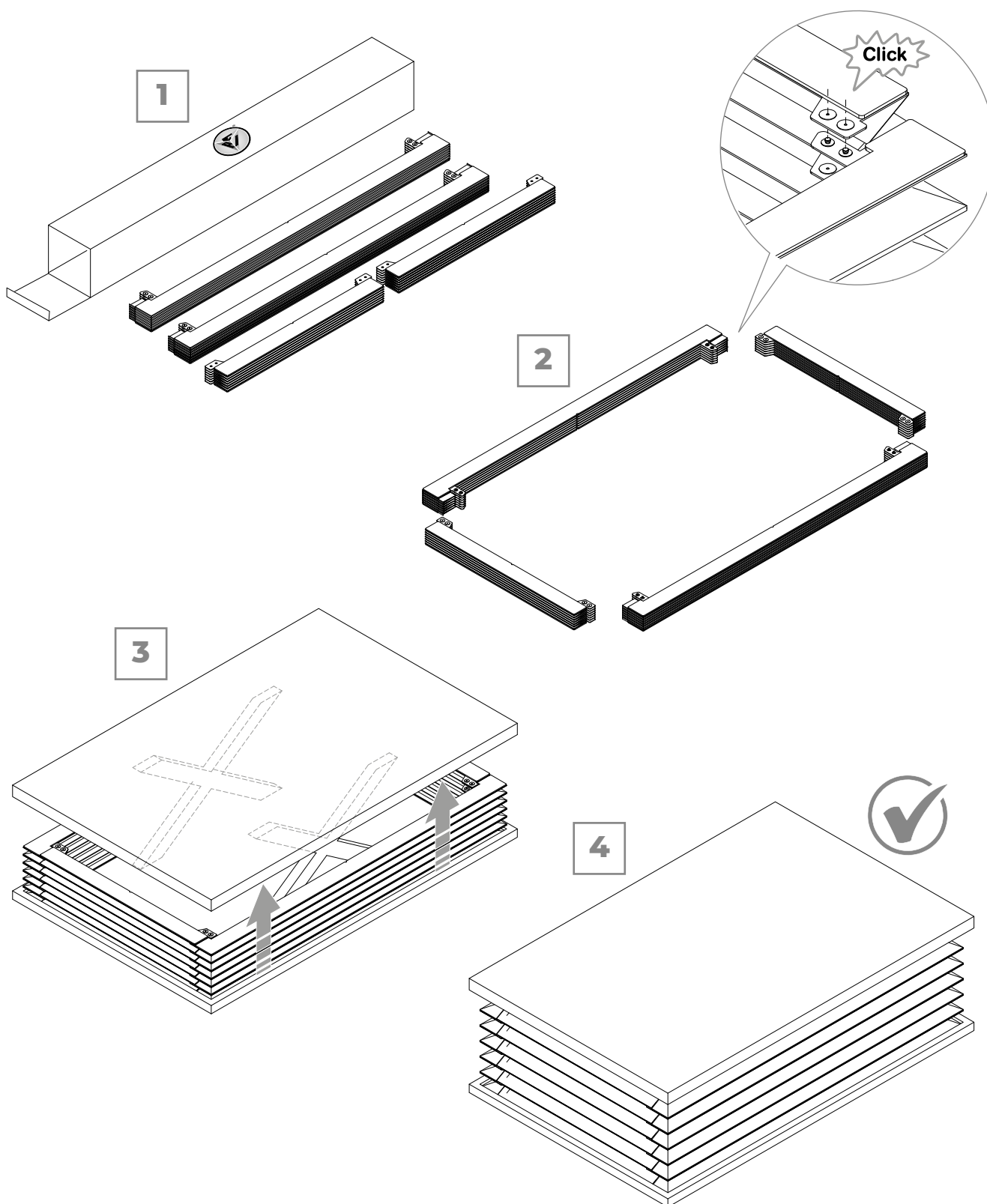


Fill in the form available on our website to receive a tailored offer of the most suitable Bellow for hoisting platforms according to your project requirements

[click here](#)

QUICK BOX BELLOWS (Patented)

Assembly sequence:



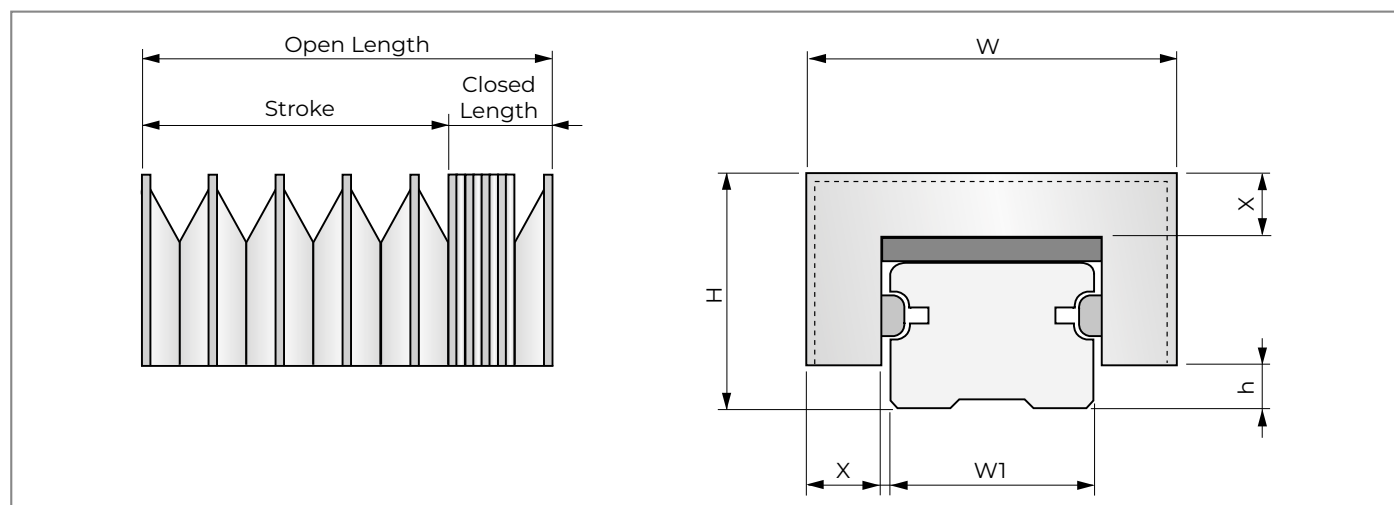
full video available on  YouTube





THERMIC-WELDED COVERS FOR LINEAR SLIDES

Thanks to the cutting precision of the PVC supports, which guarantees perfect adhesion to the slide, and the range of materials used, **P.E.I.** bellows are widely used in all industrial sectors.



Standard thermic-welded covers size

Slide nominal value W1 (mm)	Ply height X (mm)	Bellow width W (mm)	Total height H (mm)	Slide deviation h (mm)
15	19	56	36	5
20	19	61	40,5	5
25	19	67	43	7,5
30	19	72	51	8
35	19	76,5	51	9
45	19	87,5	61	10
55	25	108	73	15
65	32	132	90	15

(For the W1 slide over size 65, please contact our Technical Dept.)

Standard materials list

Material Type	Support	Fabric material	Closed length for 1000 mm of open length
S1	PVC 0,50	PVC + Polyester + PVC 0,25 (TEMAT020)	90 mm
P1	PVC 0,50	Polyurethane + Polyester + Polyurethane 0,25 (TEMAT015)	90 mm
LX	PVC 1,00	Polyurethane Panox/Kevlar + Polyurethane 0,33 (TEMAT169)	150 mm

Fill in the form available on our website to receive a tailored offer of the most suitable Thermic-welded Covers for Linear Slides according to your project requirements

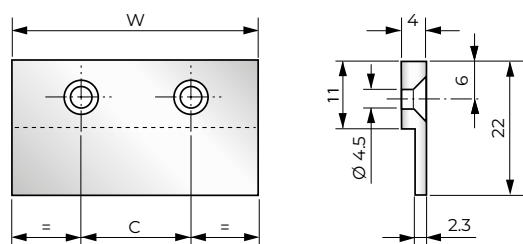
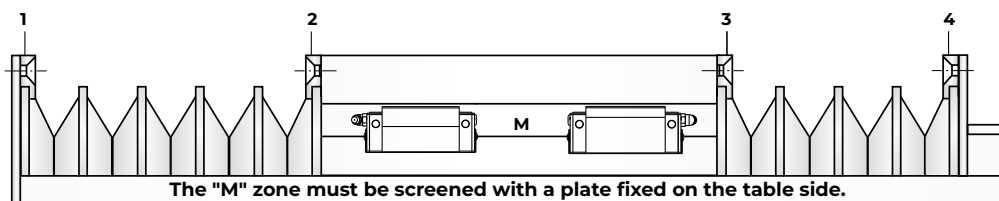
[click here](#)

Thermic-welded covers standard systems for linear slides

For different sizes, please contact our technical department.

Solution A: Fastening holdfasts

Suitable for heavy working places and in coolants presence

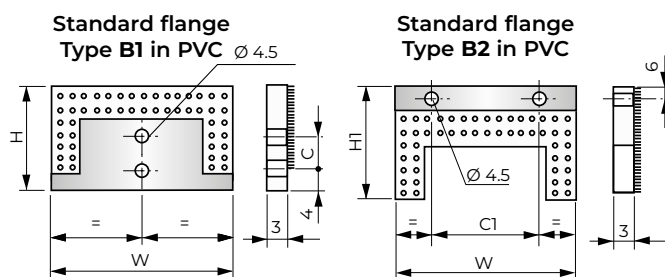
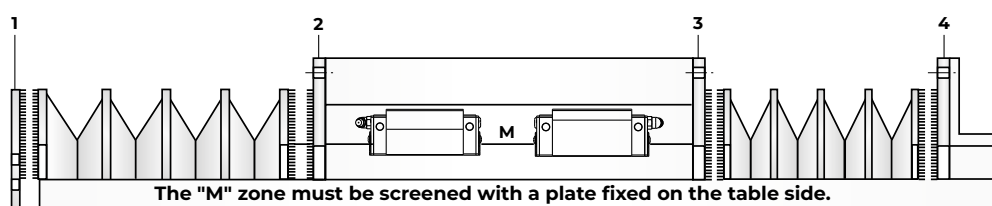


SLIDE	W	C	HOLES No.
15	52	26	2
20	57	29	2
25	63	32	2
30	68	34	2
35	72	36	2
45	83	28	3
55	104	35	3
65	128	32	4

Suitable for bellows fastening in positions **1 - 2 - 3 - 4**, with angular or plate supports provided by customers.

Solution B: Velcro flange fastening (B1 and B2)

Suitable for dry working places



SLIDE	W	H	C	H1	C1	HOLES No.
15	56	36	0	42	26	2
20	61	40,5	8	46,5	29	2
25	67	43	8	46,5	32	2
30	72	51	8	54	34	2
35	76,5	51	18	53	36	2
45	87,5	61	18	62	28	3
55	108	73	18	69	35	3
65	132	90	18	86	32	4

- Pos. **1** a) Fix the type 1 standard flange at the head of the slide.
b) Fix the bellows to the type 1 standard flange by pressing strongly.
- Pos. **2-3** a) Fix the table or the mounting plate to the type 2 standard flange by means of screws.
b) Fix the bellows to the type 2 standard flange by pressing strongly.
- Pos. **4** a) Fix the type 2 standard flange to the angular support provided by the customer by means of screws.
b) Fix the bellows to the type 2 standard flange by pressing strongly.

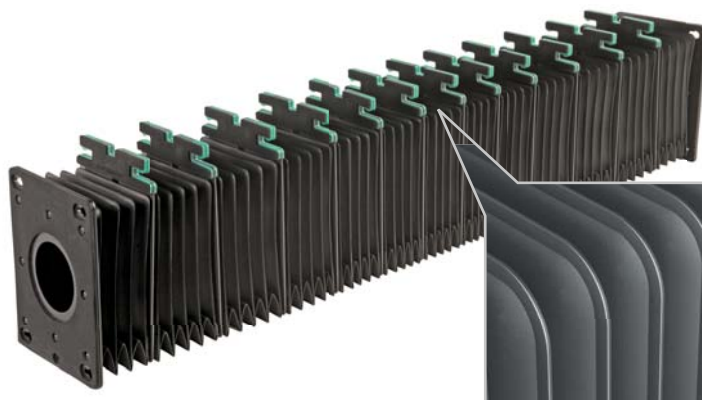
N.B. Fastening options showed in Pos. 1-4 are interchangeable

Dimensions in mm.

BELLOWS FOR LASER MACHINES

The bellows for the mechanical parts are made of fabric with high strength

The bellows for the optical beam ensure the sealing of the pressurised gas and limit any divergence of the laser beam by means of internal metal inserts. The fabric is also self-extinguishing and does not emit dust.





UNIQUE STEEL COVER EVO (Patented)

The new ultra-compact bellow system

UNIQUE STEEL COVER EVO is the innovative bellow with stainless steel slats that involves the use of bellows only in some parts of the cover, making the product very light.

UNIQUE STEEL COVER EVO fits specially for X-Y shield configurations. It features excellent chip resistance with extremely reduced overall dimensions: **the closed length measures 40% less than traditional bellows**, making it **the most suitable product for applications with particularly small spaces**.

The new bellow has a *green soul*: it is manufactured from **materials of which 90% can be recycled** and with no use of glues and solvents. Thanks to its light weight, it allows significant energy saving during use.

- 40% less closed length thickness
- Easy installation
- Quick maintenance operations
- Reduced oscillations in reverse rapid motion



watch on  YouTube



MULTI-STEEL (Patented)

Thermic-welded bellows with laminations on many sides are the ideal solution for complete protection of the roof and crossbar in multi-shaft working centres.

The corners are closed and steel inox laminations applied with a perfect 90° fold thanks to the elastic deformation of the material and the special geometry.

More than two sides can be covered and with different angles.

For this type of bellow consult our engineering department.



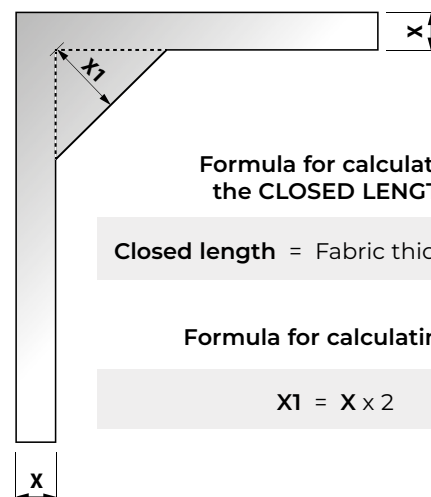
EVER-CLEAN

The construction of the corner is the main feature of this thermic-welded bellow.

The bellow is guaranteed to be free from chips and sludge, there are no creases in the fabric obstructing the chip falling into the conveyor.

The closed length of the bellow is smaller than traditional thermic-welded bellows due to the absence of folds of fabric in the corner.

For this type of bellow consult our engineering department.

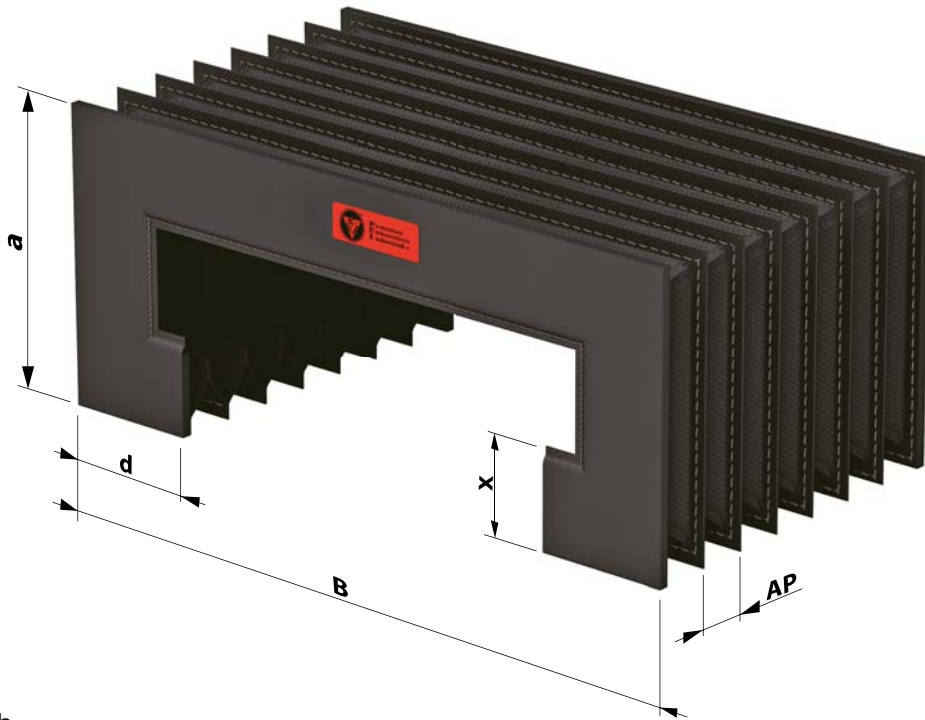


Dimensions in mm.



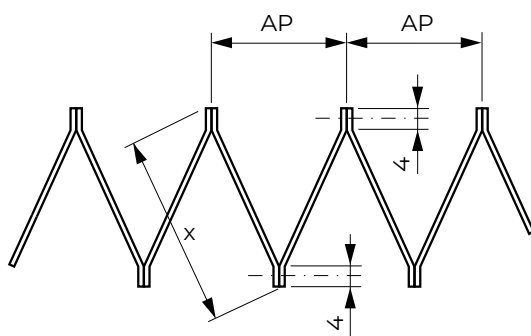
SEWN FLAT COVERS

P.E.I. sewn bellows are very robust and have a very compact closed length in relation to the stroke of the bellows. These bellows are manufactured with a double seam on the folds. Since there is no pleat, the accumulation of chips and emulsions on the bellows is avoided. If the application requires special structural rigidity, profiled metal intermediate elements can be provided for a secure support on the guideway.



- B** = Outside width
a = Outside height
d = Return dimension
x = Fold height
AP = Fold opening

Sewn style



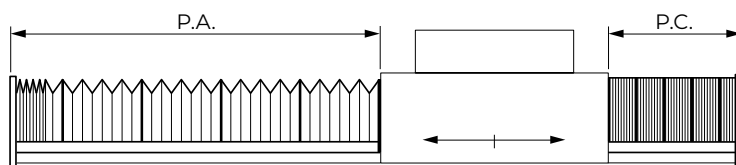
Formula for calculating the CLOSED LENGTH

$$\mathbf{P.C.} = \mathbf{NP} \cdot 2,5 + \text{flange thickness}$$

$$\mathbf{NP} = \text{Number of folds} = \frac{\mathbf{P.A.}}{\mathbf{AP}} + 2$$

$$\mathbf{AP} = \text{Opening of 1 fold} = (\mathbf{x} - 8) \cdot 1,41$$

Dimensions in mm.



- P.A.** = Open length
P.C. = Closed length

Contact our engineering department for this type of cover.

Fill in the form available on our website to receive a tailored offer of the most suitable Sewn Flat Cover according to your project requirements

[click here](#)



SEWN ROUND BELLOWS

They are used where a very compact closed length is required.

- High resistance to mechanical and dynamic stress
- Resistance to coolants and oils
- Suitable for high temperatures
- Available with guide bushings and reinforcement rings
- No tooling costs
- Minimum internal diameter starting at 20 mm
- Any size external diameter
- With selected edging (in safety colors upon request)

Materials available:

Polyester coated with Neoprene* (from 0,3 to 1,2 thick)

Polyester coated with PVC (from 0,3 to 0,7 thick)

TEMAT007

TEMAT164-TEMAT165

TEMAT009

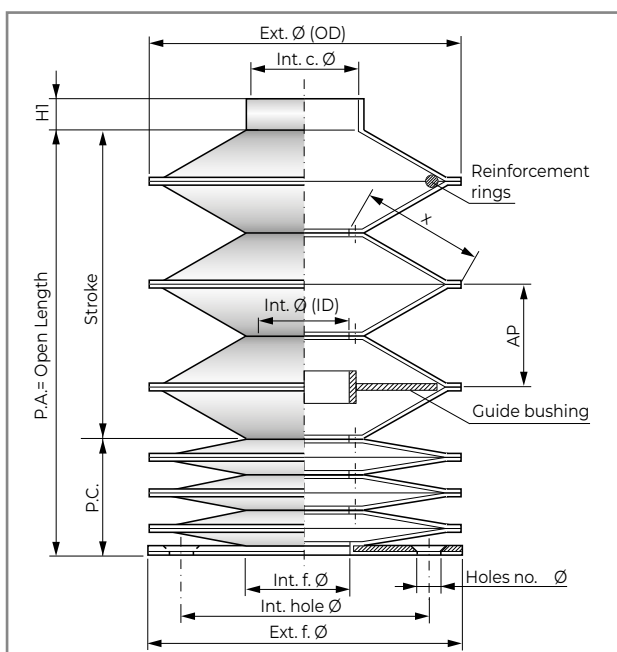
TEMAT011

TEMAT081

* Neoprene is a registered trademark.

You find the [materials list](http://www.pei.it) on our website www.pei.it

Other materials available upon request:
contact our engineering department.



Dimensions in mm.



Formula for calculating the CLOSED LENGTH

$$P.C. = \text{Closed length} = NP \cdot SP^*$$

$$NP = \text{Number of folds} = \frac{P.A.}{AP} + 1$$

* **SP** = Thickness of 1 fold (see [materials list](http://www.pei.it) on our website www.pei.it)

$$AP = \text{Opening of 1 fold} = \left(\frac{\text{Ext. } \varnothing - \text{Int. } \varnothing}{2} - 6 \right) \cdot 1,2$$

Note: When steel rings are required inside the folds, the **P.C.** is calculated by our engineering department.

THERMIC-WELDED TIGHT BELLOWS

They are used when leak-tight protection of the components (i.e. screws, shafts, etc.) is necessary against the contamination made by coolants.

They have good chemical and heat resistance according to the properties of the materials used. Thermic-welded tight bellows are available in various shapes and dimensions.

Small tooling costs for new moulds should be considered, if not already available in stock.

Materials available:

TEMAT 018

TEMAT 019

TEMAT 153

TEMAT 153/S

TEMAT 156

TEMAT 081

You find the [materials list](http://www.pei.it) on our website www.pei.it

Other materials available upon request: contact our engineering department.





HEAT-FORMED, OPENABLE ROUND BELLOWS

These are used when high mechanical strength and heat resistance are required.

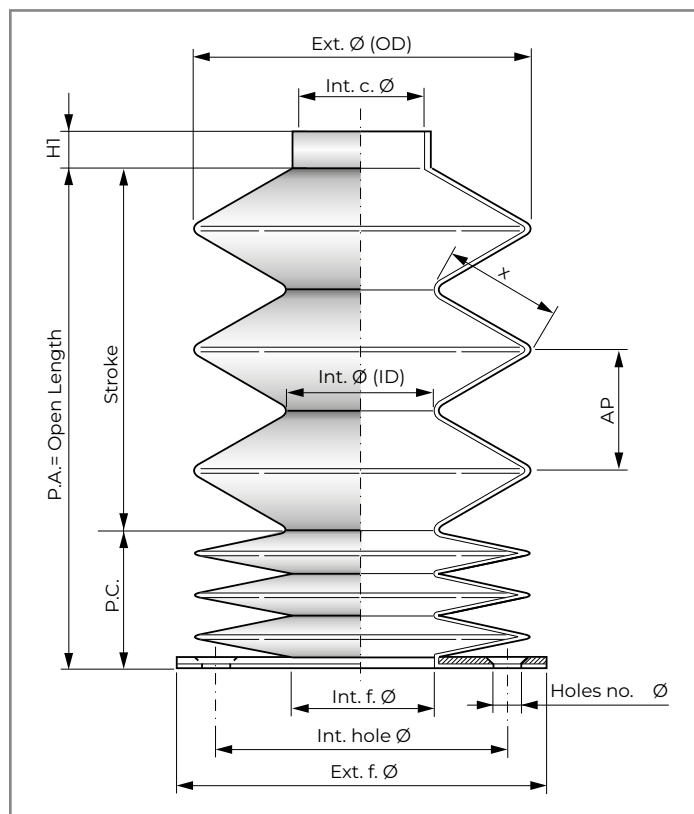
They are characterised by excellent resistance to mechanical stress as well as to coolants and oils. They are also available in cone-shaped according to the needs. They do not involve any cost of equipment and have an excellent quality / price ratio. On request, the heat-formed and openable round bellows are available with guide bushings and reinforcement rings.

Materials available:

TEMAT202
TEMAT018
TEMAT019
TEMAT081
TEMAT094

You find the [materials list](#) on our website www.pei.it

Other materials available upon request: contact our engineering department.



Upon request with **longitudinal opening** seam when the bellow must be disassembled without dismantling the part to be protected.

Formula for calculating the CLOSED LENGTH

$$P.C. = \text{Closed length} = NP \cdot SP^*$$

$$NP = \text{Number of folds} = \frac{P.A.}{AP} + 1$$

* **SP** = Thickness of 1 fold (see [materials list](#) on our website www.pei.it)

$$AP = \text{Opening of 1 fold} = \left(\frac{\text{Ext. } \varnothing - \text{Int. } \varnothing}{2} \right) \cdot 1,41$$

Note: When steel rings are required inside the folds, the **P.C.** is calculated by our engineering department.

Fill in the form available on our website to receive a tailored offer of the most suitable Round Bellow according to your project requirements

[click here](#)

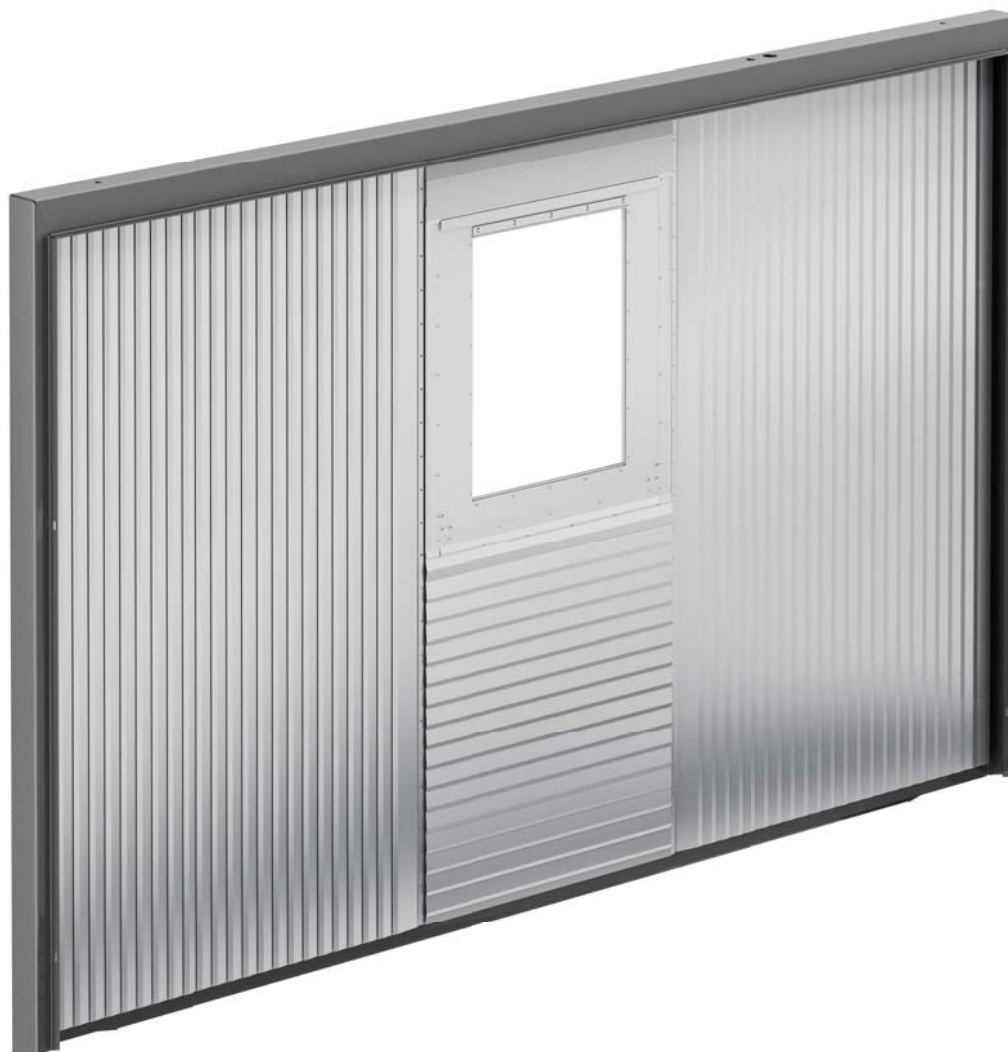
X-Y SHIELD

Dynamic bellows protection

X-Y SHIELD is a dynamic complete protective system giving a double protection barrier along the X and Y axes of machine tools. Thermic-welded bellows with stainless steel laminations separate the working area from the motor compartment, ensuring:

- Double protection, as the laminations protect the bellows from hot and sharp-edged chips, while the fabric material safeguards the guides from the inlet of oils and coolants
- High performance: speeds of up to 120 m/min. and accelerations up of 2g
- Versatility: for horizontal and vertical machining centres of any dimensions
- Sturdiness and pleasant appearance: durable and well-finished design
- Customisation: variant with bellows without fabric (see page 45).

X-Y SHIELD is the most suitable solution if reliability and safety in high-performance industrial environments are required.



APPLICATION EXAMPLE





MODULAR X-Y SHIELD

A new technology for quick and easy installation

A **new technology** has been developed by **P.E.I.** to design and manufacture the bellow shields much faster, in order to offer a **more efficient service** to our customers.

We have improved the design and production of the frame, replacing the ribbed sheet metal with standardised aluminium profiles, making manufacture more precise and delivery times significantly faster.

The result is modularity in project and production, which offers the customer **many advantages** in addition to fast delivery, such as significantly **smaller overall dimensions** and **easier assembly**.

What's more, **the installation in the machine is really versatile**: the customer may use the most suitable fixing systems, without application restrictions.

- Outstanding fixing versatility
- Quick and easy assembly
- Minimum space required
- Fast delivery



Fill in the form available on our website to receive a tailored offer of the most suitable Shield according to your project requirements

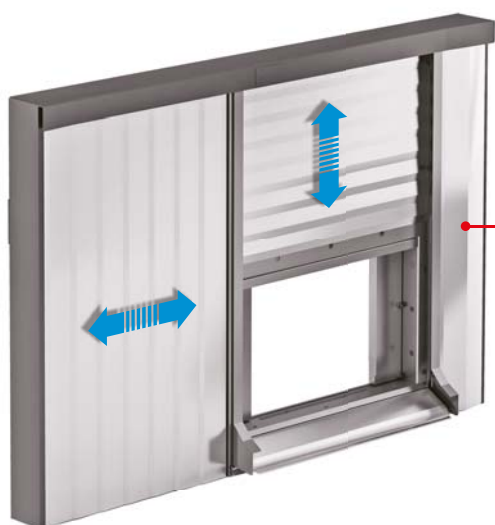
[click here](#)



Most usual options

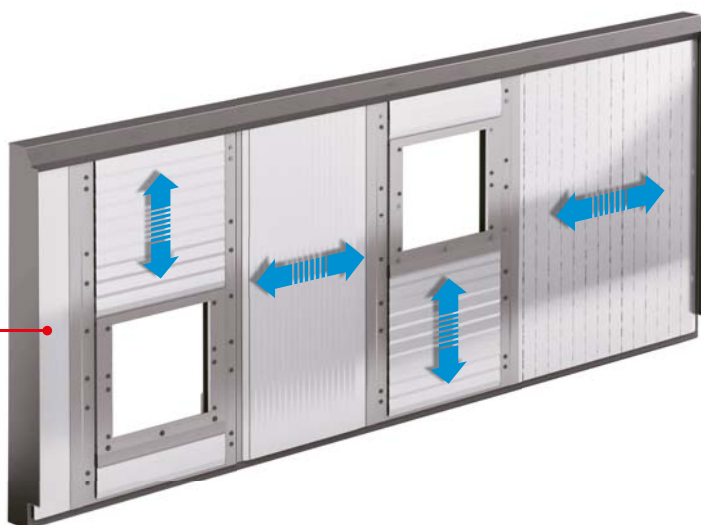
SHIELD WITH FIXED LAMINATION BELLOWS

The most common solution for complete axes protection.



SHIELD WITH FLEXIBLE LAMINATION BELLOWS

Suitable for applications in case of tight bellows closed lengths on vertical axis. Optimal performance even in limited space conditions.



SHIELD FOR MULTIPLE HEADS

Configuration allowing to use bellows with fixed or flexible laminations.

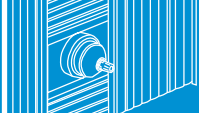


SHIELD FOR HIGH TEMPERATURE

Resistant bellows, without laminations, specific for applications in high temperature environments. Particularly used for 3D printers.

CUSTOMIZED OPTIONS

Special configurations can be manufactured for the different operative requirements of machine tools.



Structure of shield covers with laminations

- 1) SUPPORTING STRUCTURE
- 2) FRONTAL BELLOWS
- 3) VERTICAL BELLOWS
- 4) SPINDLE OPENING
- 5) WIPER



Fill in the form available on our website to receive a tailored offer of the most suitable Shield according to your project requirements

[click here](#)

GIANT SHIELD

Large size shield

Gigantic protective wall characterised by its dimensions over standards, which is suited for huge machine tools where large parts have to be machined.

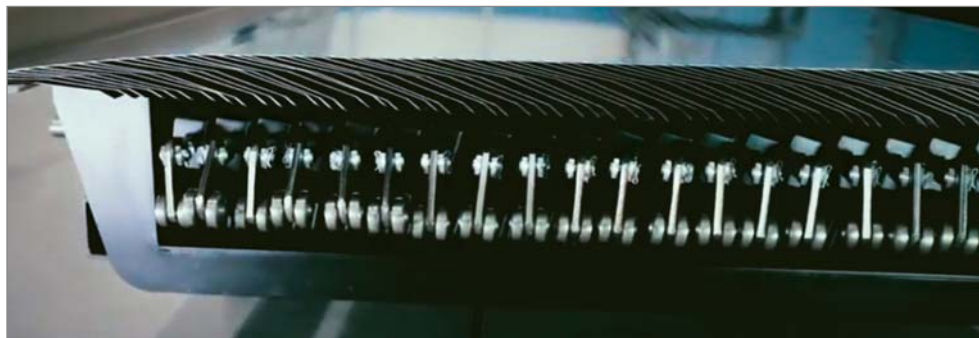
It can be built up to a height of 6000 mm with laminations featured by special characteristics allowing dynamic movement with elasticity, stiffness and effortlessness.

The fabric material at the rear of the blades, made of special texture and thermic-welded along its entire height, provides for an effective protective barrier against the penetration of coolants, which the laminations alone could not guarantee.

GIANT SHIELD follows each transverse movement of the machine head.

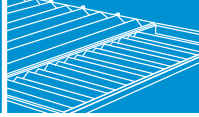


The stainless steel laminations represent the rigid part of the cover, a protective barrier against incandescent chips escaping during the machining of work pieces.



[watch on](#)  YouTube





WAVE SKY SYSTEM

Bellows for overhead protection for portal milling machines

This range of bellows limits the escape of fumes, dust and chips from the machining area.



[watch on](#)  YouTube



VERSION	MAX SPEED mt/min.	MAX ACCELERATION g	MAX WIDTH BETWEEN GUIDES mm	MAX STROKE mm	STANDARD FOLD HEIGHT mm	USE
WAVE SKY	90	1	6.000	25.000	100 / 150 / 200 / 250 / 300	applications in the machine tool sector
WAVE SKY LIGHT	60	1	2.000	8.000	100 / 150 / 200 / 250	machine tools / other sectors
WAVE SKY HEAVY	90	1	10.000	25.000	150 / 200 / 250 / 300	for covering over 6.000 mm width
WAVE SKY CHEMICAL	60	1	6.000	25.000	100 / 150 / 200 / 250 / 300	chemical treatment plants
WAVE COVER	to be defined in the design phase					machines with Z-axis less than 2 meters

WAVE SKY

By using the **WAVE SKY** overhead protective cover, the suction force can be reduced when extracting fumes during machining carbon fibres, composite materials and vaporised cooling lubricant. The special translucent fabric guarantees ample light in the work area.



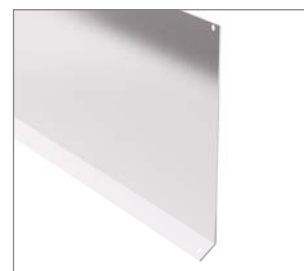
Movement using rollers



Modular support made of aluminium



Special high strength fabric



Guide cover casing

WAVE SKY LIGHT

WAVE SKY LIGHT is a version of Wave Sky suitable for applications where a small closed length is required despite of long strokes. Stability and durability are the same as for the traditional Wave Sky. The translucent fabric is suitable not only for machine tools, but also for other applications. The same guides are used as for Wave Sky.



Sliding on guides



Lateral guides modular and adjustable



Guide cover casing

WAVE SKY HEAVY

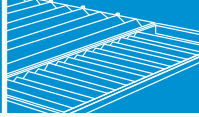
WAVE SKY HEAVY is a version of Wave Sky for applications with a **machine width of over 6 metres**. The same guides are used as for Wave Sky.



Double bearing sliding

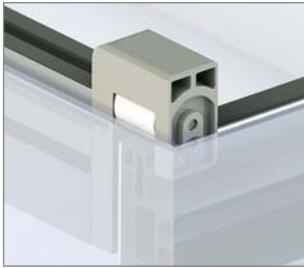


Crossbar guide



WAVE SKY CHEMICAL

WAVE SKY CHEMICAL is a version of Wave Sky, suitable for closure of chemical plants for surface treatments, as galvanic, chromium-plating, painting treatments. It ensures optimal protection of the tanks in a very small space, with easy maintenance and high level of customisation.



Polymer carriages resistant to the aggression of surface treatments



Technical polymer fabric created to resist against the aggression of chemical agents

WAVE COVER (Patented)

This **P.E.I.** solution is a complete roof cover for gantry and portal machines **with Z-axis up to 2 meters** that allows the machine operators to access the machining chamber without opening the cover.

Differently from Wave Sky, **WAVE COVER** has a portal shape with sides and roof making the structure self-supporting.

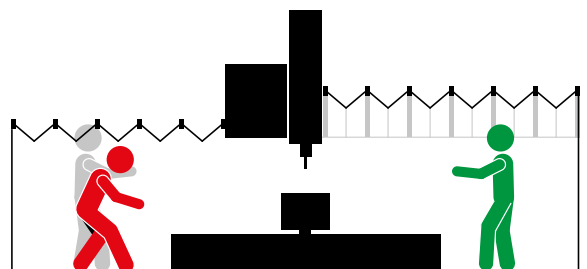


The plastic hinges in the sides are rigid enough to prevent tipping over, but flexible enough to ensure the mechanism opens and closes.

The system is designed so that all the frames remain parallel and vertical to each other.

WAVE COVER is based on the same modular construction as Wave Sky, but uses a "gable" roof solution which increases the height of the workspace.

The cover can be fitted at any guide height.



SMARTDRIVE HP (Patented)

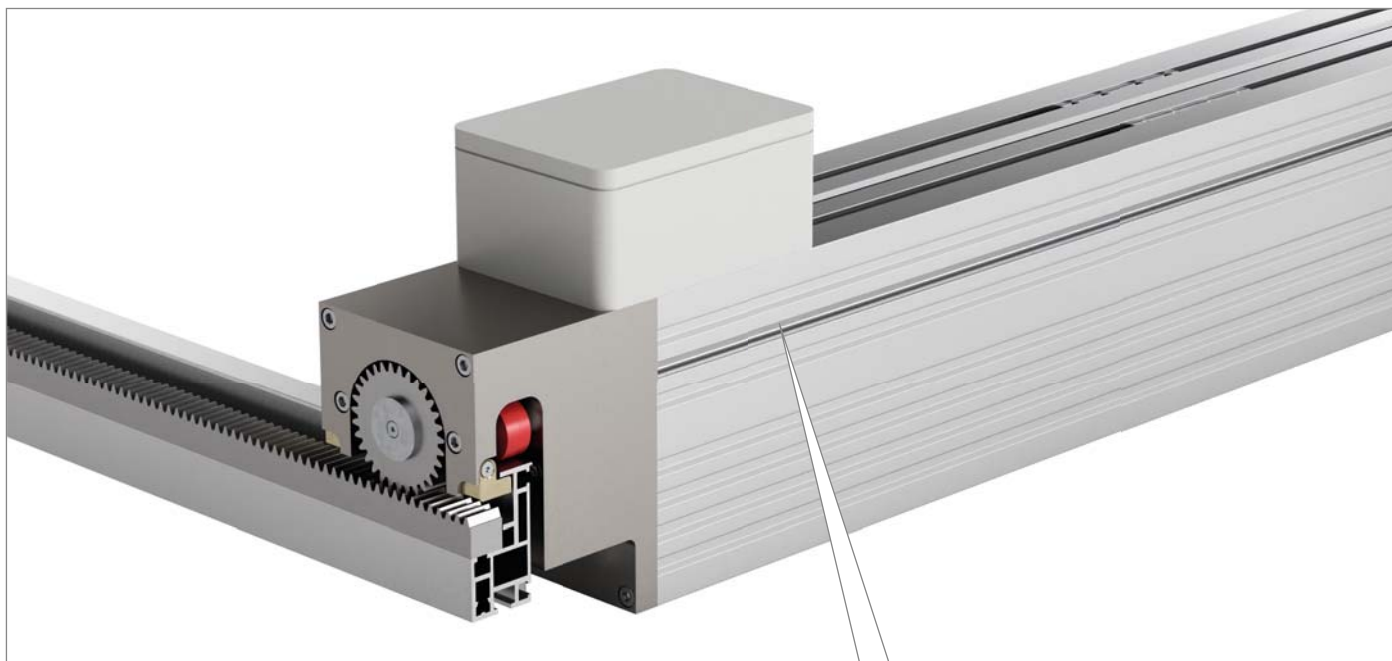
Motorised solution for Wave Sky roof protection

P.E.I. has updated the design of the range of Wave Sky roof protections, introducing the new **Smartdrive HP**.

The rack has been positioned outside the protective cover, allowing smoother movement, much easier maintenance and longer service life.

This Plug & Play solution enables continuous machine operation, avoiding costly downtime: the range of Wave Sky roof protections becomes even more powerful and reliable.

Smartdrive HP is available for all Wave Sky versions (STANDARD, LIGHT and HEAVY).



Compared to the previous version, the pulling and braking force has been doubled thanks to two motors installed in a removable module that can be completely and easily removed for maintenance operations in case of failure.

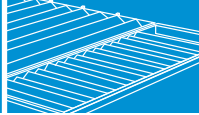
Two electric brakes at the ends of the drive shaft enable the machine to be stopped.

New **Smartdrive HP** is perfectly interchangeable with its previous version: it features the same overall dimensions and it may be easily replaced on current Wave Sky installations.



APPLICATION EXAMPLE





FABRICS SUITABLE FOR ROOF PROTECTIVE COVERS

TEMAT154

Excellent resistance to petrol based products, oils and strong abrasion. The textile insert is made of a special fabric with high rigidity in the diagonal weave and an aesthetically pleasing appearance. It is normally used in environments where there are large quantities of chips.

Translucent and antistatic.



Bellow cover in translucent and double weave fabric



Detail of the antistatic feature of the fabric

CODE	Description of materials			Thickness (mm)	Heat resistance	
	Visible side	Fabric insert	Hidden side		Momentary contact °C	Continuous °C
TEMAT154	Polyurethane	Polyester	Polyurethane	0,9	+130	-30 +90

CERAMIX (P.E.I. CODE TEMAT 180)

It has an excellent abrasion resistance and excellent shear strength. It shows excellent resistance to mineral oils and hot temperatures. The two-ply fabric insert gives an high transverse rigidity and a very attractive appearance.

In Wave Sky, Ceramix is only used in the bellow folds close to the working area, when large quantities of aluminium hot and shearing shavings are produced, in cases of high speed chip-removing dry work environments.

Antistatic.

CERAMIX LIGHT (P.E.I. CODE TEMAT 181)

It has an excellent abrasion resistance and excellent shear strength. The fabric insert is made by an antistatic-proof material with good transverse rigidity and a very attractive appearance.

Ceramix Light is normally used in case of hot and shearing shavings, or in high speed chip-removing dry or wet work environments. Antistatic.

CODE	Description of materials			Thickness (mm)	Heat resistance	
	Visible side	Fabric insert	Hidden side		Momentary contact °C	Continuous °C
TEMAT180	CPT*	Polyester	-	1,8	+1200	-30 +90
TEMAT181	CPT*	Polyester	-	0,9	+1200	-30 +90

* Ceramic Polymer Technology



SOME APPLICATIONS ON MACHINE TOOLS

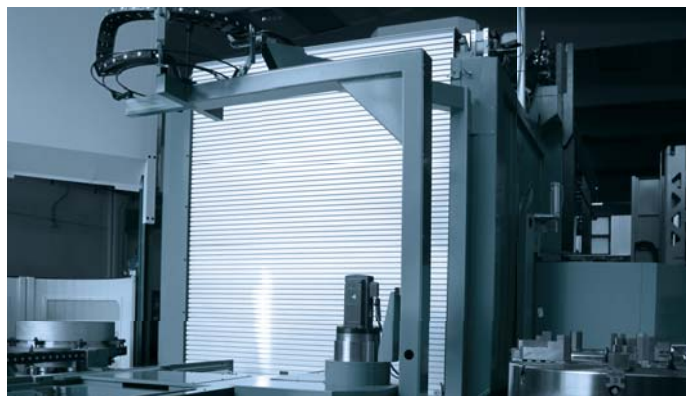
CNC MACHINING CENTERS



GANTRY MACHINING CENTERS



TURNING CENTERS



MILLING CENTERS



VERTICAL TURNING MACHINES



CNC TURNING MACHINES



BORING AND MILLING CENTERS



PORTAL MILLING MACHINES



More information on our website www.pei.it



FURTHER APPLICATIONS OF THE P.E.I. PROTECTIVE COVERS

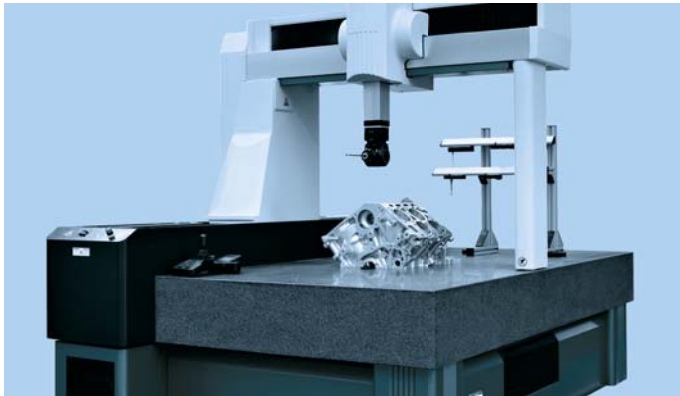
SECURITY



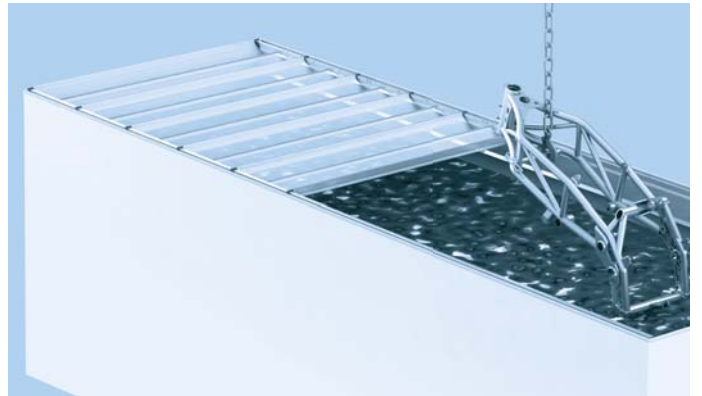
LABORATORY TESTING MACHINES



MEASURING MACHINES



GALVANIC AND SURFACE TREATMENTS



MEDICAL SECTOR



LOGISTICS



AGRICULTURE



FOOD INDUSTRY



More information on our website www.pei.it



HEADQUARTERS:

P.E.I. S.r.l.

Via Torretta, 32 - 32/2 - 34 - 36

40012 Calderara di Reno - BOLOGNA - ITALY

Ph. +39 051 6464811 - Fax +39 051 6464840

E-mail: info@pei.it

Web: www.pei.it



ITALIAN Sales Network

EMILIA ROMAGNA (Except Piacenza) REPUBLIC OF SAN MARINO LOMBARDIA EST (Mantova)

Giuseppe Stoduto

Mob. 340.7706446 - Fax 051.6464841

E-mail: gstoduto@pei.it

MARCHE ABRUZZO MOLISE

FIR di Andreani Paolo S.a.s.

Paolo Andreani

Mob. 328.3291718 - Fax 071.2862356

E-mail: info@firsas.com

LOMBARDIA EST (Milano Est and Town, Como, Cremona, Lodi, Varese, Bergamo, Brescia, Lecco, Sondrio, Monza)

Daniele Sacchetti

Mob. 348.2730226 - Fax 02.89201651

E-mail: dsacchetti@pei.it

LOMBARDIA OVEST (Milano Ovest, Pavia) EMILIA (Piacenza) LIGURIA

Enrico Santin

Mob. 348.2701257 - Fax 0384.296706

E-mail: esantin@pei.it

PIEMONTE VALLE D'AOSTA

Fabrizio Pavese

Mob. 346.8581505

E-mail: fpavese@pei.it

TOSCANA UMBRIA

Michele Garuglieri

Mob. 339.7976988

Fax 055.8572149

E-mail: michele.garuglieri@hotmail.it

TRENTINO - ALTO ADIGE VENETO (Vicenza, Verona)

Luca Covolo

Mob. 392.5764338

E-mail: lcovolo@pei.it

VENETO (Padova, Venezia, Belluno, Rovigo, Treviso) FRIULI VENEZIA GIULIA (Udine, Trieste, Pordenone, Gorizia)

Gianluca Canova

Mob. 340.7938990

Fax 049.9004214

E-mail: gcanova@pei.it



GERMAN Sales Network

North - East

Uwe Rühlig

D-09130 Chemnitz

Ph. +49 (0)173 2539750

E-Mail: uruehlig@pei.eu

Middle - West

Detlef Moh

D-53773 Hennef

Ph. +49 (0)163 6976464

E-Mail: dmoh@pei.eu

Bavaria

Reinhardt Wellenreiter

D-82054 Sauerlach

Ph. +49 (0)157 74706565

Fax +49 (0)8104 647036

E-Mail: rwellenreiter@pei.eu

Baden-Württemberg

Frank Wiehler

D-72793 Pfullingen

Ph. +49 (0)163 6846717

Fax +49 (0)7121 137194

E-Mail: fwiehler@pei.eu

**AUSTRIA:****Radka Kotrousova**

A - 4040 Linz

Ph. +43 660 22 85 212

E-mail: radka.kotrousova@pei.eu

**BENELUX:****Technisch buro Hemmes B.V.**

Granaatstraat 50

7554 TR Hengelo - Nederland

Ph. +31 (0)74 2 504 374

E-mail: hemmes@tah.nl

Web: www.tah.nl

**DENMARK:****Bondy Lmt**

A/S, Hassellunden 14

DK - 2765 Smørum

Ph. +45 7015 1414

E-mail: fha@bondy.dk

Web: www.bondy.dk

**FINLAND:****Movetec Oy**

Suokalliontie 9

01740 Vantaa

Ph. +358(0)9 52592 334

E-mail: sami.kivisto@movetec.fi

Web: www.movetec.fi

**FRANCE:****Cetic S.a.**

2 rue Hélène Boucher

78125 Gazeran

Ph. +33.130.491120

E-mail: contact@cetic.fr

Web: www.cetic.fr

**GREECE:****MICHAEL LATSOS & Co O.E.**

Ethnikis Antistaseos 39

GR - 570 08 Ionia - Thessaloniki

Ph. +30 2310 778922

E-mail: info@mlatsos.gr

Web: www.mlatsos.gr

**NORWAY:****Aratron AS**

Bjørnerudveien 17, OSLO

Ph. +47 23191660

E-mail: firmapost@aratron.no

Web: www.aratron.no

**POLAND:****Mercator**

Ph. +48 (22) 625 65 41

E-mail: mercator@mercator-e.pl

Web: www.mercator-e.pl

**PORTUGAL:****REIN Solutions**

Portal de Gamarra, 36 Pabellón nº 14

01013 Vitoria-Gasteiz (Álava) - SPAIN

Ph. +34 945 121 128 - Fax +34 945 266 437

E-mail: info@exrein.es

Web: www.rein-solutions.es

**SLOVAK REPUBLIC AND CZECH REPUBLIC:****Radka Kotroušová**

technické poradenství

Ph. +420 777 590 967

E-mail: radka.kotrousova@pei.eu

**SPAIN:****REIN Solutions**

Portal de Gamarra, 36 Pabellón nº 14

01013 Vitoria-Gasteiz (Álava)

Ph. +34 945 121 128 - Fax +34 945 266 437

E-mail: info@exrein.es

Web: www.rein-solutions.es

**SWEDEN:****Damaskus Maskinskydd AB**

Anläggargvägen 2

SE - 136 44 Handen

Ph. +46 (0)8 556 505 20

E-mail: info@damaskus.se

Web: www.damaskus.se

**SWITZERLAND:****French speaking Switzerland: CETIC Suisse**

43 boulevard Georges Favon

CH-1204 Genève

Ph. +41 (0)22 519 24 12

contact@cetic.ch

Italian speaking Switzerland: Enrico Santin

Mob. +39 348.2701257 - Ph. / Fax +39 0384.296706

E-mail: esantin@pei.it

German speaking Switzerland: Reinhardt Wellenreiter

82054 Sauerlach

Ph. +49 (0)157 74706565 - Fax +49 (0)8104 647036

E-mail: rwellenreiter@pei.eu

**TURKEY:****ENESTEKNIK ENDÜSTRİYEL ÇÖZÜMLERİ****MAK. İNŞ. SAN. VE TİC. LTD**

Alaaddinbey Mah. 622 Sok. Sera Plaza 1/C

Nilüfer - BURSA

Tel. +90 224 443 66 77 - Fax +90 224 443 64 62

E-mail: enes@enesteknik.com

Web: www.enesteknik.com

**UNITED KINGDOM:****Boreflex Ltd**

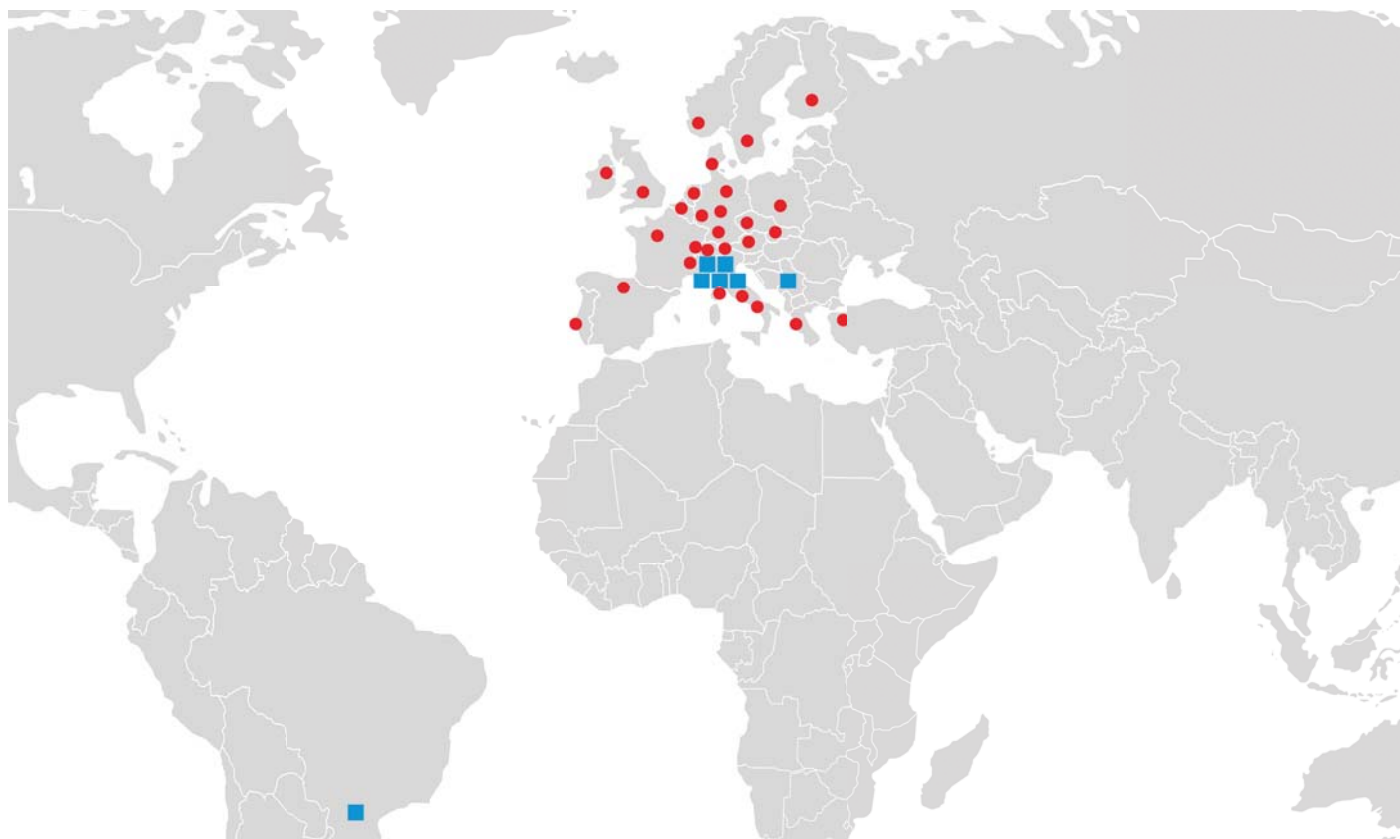
Unit 8,9,10, Gateway Court, Gateway Indust. Estate, Parkgate

Rotherham, South Yorkshire, S62 6LH

Ph. +44 01709 522333 - Fax +44 01709 522663

E-mail: sales@boreflex.co.uk

Web: www.boreflex.co.uk



■ Head Offices and Factories of P.E.I. Group

● Sales Network of P.E.I. Group



ITALY

P.E.I. Srl
Calderara di Reno (Bologna)



ITALY

PEI VM
Zola Predosa (Bologna)



ITALY

ZANINI
Zola Predosa (Bologna)



ITALY

PEI MOBILITY
Zola Predosa (Bologna)



ITALY

SPER
Solarolo Rainerio (Cremona)



ITALY

NUOVA METAL
Piadena - Drizzona (Cremona)



GERMANY

Ismaning



REPUBLIC OF SERBIA

Velika Plana



BRAZIL

Bento Gonçalves/RS



Release 01 / 2026



Protezioni
Elaborazioni
Industriali

P.E.I. S.r.l.

Via Torretta 32 - 32/2 - 34 - 36
40012 Calderara di Reno
BOLOGNA (ITALY)
Tel. +39 - 051 - 6464811
Fax +39 - 051 - 6464840
info@pei.it ■ www.pei.it